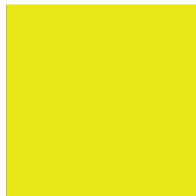
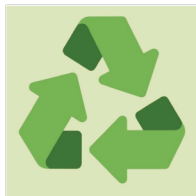


Protect the
Environment



Pennsylvania Convention Center

Sustainability Report 2021



TABLE OF CONTENTS

Overview and 2021 Highlights.....	03
Leadership Message.....	04
The Pennsylvania Convention Center.....	05
Sustainability Programs, Training and Certification.....	06
Sustainable Events.....	08
Natural Products Expo East 2021	
Lights Out Philly	
Earth Month and Earth Day 2021	
Earth Hour	
2021 Projects.....	13
ESCO Projects	
Capital Projects	
Building Projects	
Utility Usage and Performance.....	15
Electricity	
Natural Gas	
Water	
Waste Usage and Recycling Performance.....	18
Cleaning and Purchasing.....	19

OVERVIEW

The 2021 Sustainability Report covers the operations at the Pennsylvania Convention Center, relative to environmental sustainability, for the 2021 calendar year. The Pennsylvania Convention Center's sustainable performance is mainly affected by factors related to event activity, such as event size, event type, and the time of year. Seasonal weather patterns and energy efficiency also play a contributing role.

2021 HIGHLIGHTS



25% of all electricity purchased went towards **Renewable Energy** Certificates (REC's) in the form of wind energy.



63.5% of all operational waste or **248.48 tons** was **recycled or diverted** away from the landfill.

Construction and Building Projects generated an additional **86.9 tons** of recycling **diverted from landfill**.



Donated 51,700 pounds of food products and **2 box trucks** of furniture.



ASM Global launches the ASM Global Acts Corporate Social Responsibility Program on October 14, 2021.

LEADERSHIP MESSAGE – THE PCC’S COMMITMENT TO SUSTAINABILITY

The Pennsylvania Convention Center Authority (PCCA) and ASM Global are mindful of our responsibility to the community and the environment. Our commitment to reducing the environmental impact of our operations and services is a key part of our efforts to sustain the Commonwealth of Pennsylvania’s investment for future generations.

In every facet of our operations, we follow best practices for sustainability and incorporate the use of equipment, technology, and products that are designed to reduce negative impacts, while providing a healthy, clean, and efficient facility operations. These best practices include the use of safe-cleaning products and protocols, guided by the Green Seal Standard for Commercial and Institutional Cleaning Services (GS-42); reduced water usage; energy efficient LED lighting; a reflective roof; and expanded recycling.

Additionally, during the last year, the PCCA has made significant investments in capital upgrades to the facility’s HVAC, lighting, power, elevators, and escalators resulting in a reduction in the Pennsylvania Convention Center’s electricity and natural gas usage.

The Center’s capacity to “go green” is critical to our customers, employees, and stakeholders. The PCCA and ASM Global Green Team will remain focused on implementing initiatives that enhance the facility’s efficiency and protect and preserve the environment and our communities.



David A. Nasatir, Esq.
Chair of the Board
Pennsylvania Convention Center Authority



Malik Staten
Vice Chair of the Board
Pennsylvania Convention Center Authority



John J. McNichol
President and CEO
Pennsylvania Convention Center Authority

THE PENNSYLVANIA CONVENTION CENTER

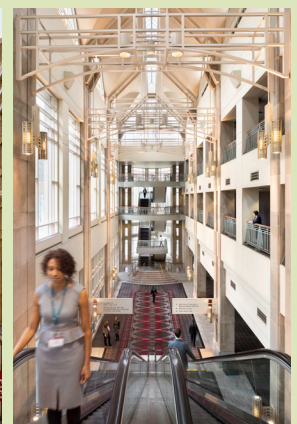
Located in the heart of downtown Philadelphia, the Pennsylvania Convention Center is one of the few convention centers that is uniquely woven into the city's landscape, offering visitors the opportunity to immerse themselves in and enjoy the full cultural, culinary, historical, and retail experiences of the city, all within walking distance of the Center.

The Pennsylvania Convention Center is among the nation's premier meeting and convention facilities, offering more than 1 million square-feet of salable meeting spaces, one of the largest ballrooms in the Northeast, advanced technology, a remarkable Pennsylvania-based art collection, and unmatched views of Philadelphia's famous City Hall.

Meeting professionals will find a flexible space that combines historic preservation with architectural innovation throughout a six-block structure. Exhibitors will find friendly work rules on the show floor and welcoming trade unions ready to assist with signature events.

Attendees will appreciate direct access to transportation options, including bus, subway, regional rail, and taxis. With more than 14,000 hotel rooms within walking distance and world-class restaurants, shops and cultural attractions across Center City, Philadelphia offers a memorable visit.

Under the management of world-class facility operator ASM Global, the Pennsylvania Convention Center and its staff host approximately 250 events a year, ranging from internationally conventions to regional company retreats. We offer decades of combined expertise and are committed to providing the best experience possible for everyone who walks through our doors.



SUSTAINABILITY PROGRAMS, TRAINING AND CERTIFICATIONS



ASM Global, a leader in environmental sustainability, is committed to reducing its environmental impact and driving business value. The company believes that its broad venue network and deep guest engagement uniquely position it to raise public awareness about environmental sustainability issues. The company's goal is to serve as an industry leader in environmental program implementation and stewardship through a partnership with guests, team members, partners, and communities.

Today, ASM Global venues around the world track monthly environmental performance metrics related to greenhouse gas emissions, water consumption and waste reduction.

On October 14, 2021, ASM Global announced the launch of ASM Global Acts, a new corporate social responsibility platform to centralize the company's philanthropic endeavors on behalf of sustainability and diversity.

Guided by the United Nations Sustainable Development Goals, ASM Global will use their new platform to further the company's goals of creating a better workplace, a more diverse workforce, serving the communities where it operates, and being an effective steward of the environment.

Based on those principles, ASM Global will establish annual targets and actively measure their progress towards achieving those goals.

As part of this program, the Pennsylvania Convention Center has been selected as one of ASM Global's flagship facilities to participate in the Protecting the Environment initiatives.

2022 ASM GLOBAL ACTS SUSTAINABILITY GOALS

- Diversion rate - For the upcoming event bookings year, we have set a diversion rate goal of 50%. In, the past event booking year, we have averaged 40%.
- Eliminate the use of plastic straws.
- Review of the Events Industry Council Sustainable Event Standards and application for Gold or Silver Status.
- Encourage alternative forms of transportation.
- Increase the green energy electricity Renewable Energy Certificate (REC) purchase from 25% to 50% startine in July 2022.

Protect the Environment

SUSTAINABILITY TRAINING

On August 31, 2021, the Pennsylvania Convention Center, in partnership with Republic Services, a leading environmental services provider, conducted annual training for the operations department to review the sustainability requirements for the upcoming show season. The training incorporated a visual learner approach for staff by sharing event floor plans, loading dock bay assignments, and show branded signage. Resulting from the session, staff gained a better understanding of the logistics associated with each green event held at the Center and were better equipped to meet and exceed the sustainability needs of our clients.



CERTIFICATIONS

LEED Gold Certification



The PCC celebrates 10 years with its LEED gold certification for construction.

GBAC Certification



The PCC received its GBAC STAR re-accreditation in 2021.

SUSTAINABLE EVENTS

NATURAL PRODUCTS EXPO EAST 2021



The Pennsylvania Convention Center was pleased to host the Natural Products Expo East (NPEE) in September 2021. At the time, the event was the largest trade show held at the facility since the start of the pandemic in March 2020.

For months leading up to the event, the PCCA/ASM Global Green Team worked closely with show management and Honeycomb Strategies, to expertly facilitate the NPEE Sustainability Plan. Honeycomb Strategies has been working with the NPEE team to support their sustainability program since 2015. Together, the two organizations work to reduce the environmental impact of the trade show, while supporting the local communities in which the show is held.

As part of the sustainability plan, the Pennsylvania Convention Center provided waste diversion and utilities management and reporting for the duration of event.

A pre-shift meeting was held with the Center's operations team, show management, the show's cleaning services provider, and Republic Services, to review the final plan for recycling and sorting. During the event, staff also participated in pre-event meetings and daily operational meetings, to reinforce the elements of the event's sustainability plan.



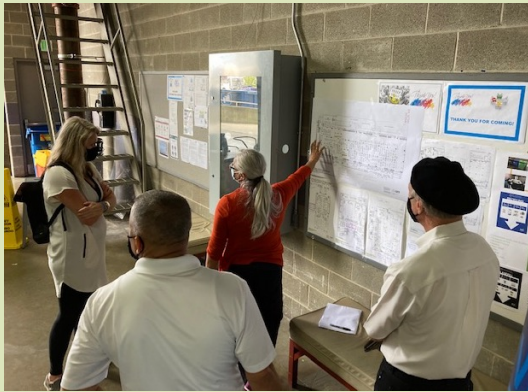
“ Despite the pandemic, one of the goals for Natural Products Expo East was to be as innovative and forward thinking as possible with our sustainability efforts. In partnership with the PCC, GES, Aramark, and a few other amazing vendors, we found creative ways to do this!

We got rid of carpet and partnered with Nilé Livingston to create compostable floor clings on the show floor. We worked with Aramark to find compostable flatware, plates and cups as well as local F&B that would have less of a carbon footprint. We worked with the PCC to provide a 3-bin waste system through the show and sorted recycling and compost in the back of the house to make sure nothing was contaminated.

These were just a few ways we worked together to create a successful Sustainability Program! As a bonus – we won the TSNN Most Sustainable Show of the Year Award! ”

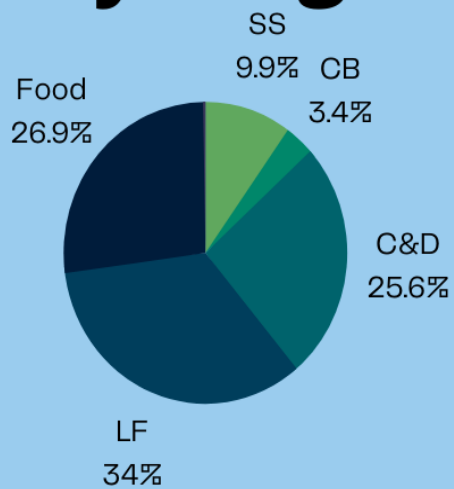
-SHARON ZITTLE
DIRECTOR OF OPERATIONS





NPEE 2021 RECYCLING BY THE NUMBERS

Recycling Streams (tons)



C&D - 24.67
 Cardboard - 3.24
 Compost - 0.26
 Food Donations- 25.85
 Landfill - 32.67
 Single Stream - 9.49

WASTE DIVERSION



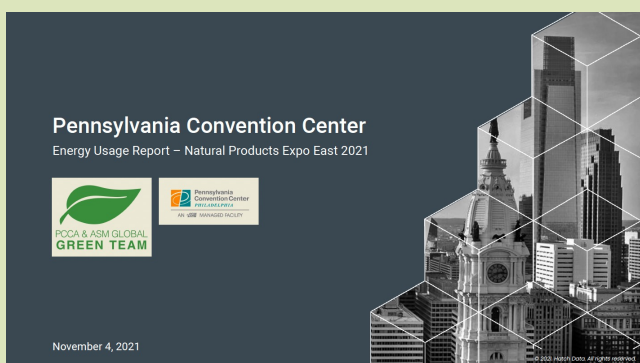
The Pennsylvania Convention Center's waste diversion initiatives fully supported the NPEE sustainability plan. These initiatives included recycling, composting, and landfilling. A critical element for the successful execution of the show's sustainability strategy was the development of a loading dock plan with designated recycling, construction and demolition, landfill, cardboard and compost stream locations.

Temporary signage was installed to guide attendees on the correct disposal of their waste and 55-gallon brute containers with cardboard recycling wraps were used to collect front of house recycling.

The Center partnered with Republic Services to provide waste management, recycling and hauling services for the show. The Center's operations team worked in conjunction with the show's contracted cleaners to provide pre and post event cleaning services.



UTILITIES



For the NPEE 2021, the Center monitored electricity, natural gas, and water usage for the duration of the show. Information will be consolidated for an energy usage report for our client.

We enjoyed hosting Natural Products Expo East in 2021 and are proud of our Green team members and their achievements. Their commitment contributed to the success of the

show and to NPEE 2021 winning the TSNN Sustainability Award for sustainable practices that were in place for the event and at the Pennsylvania Convention Center.

AWARENESS INITIATIVES

Throughout the year, the Pennsylvania Convention Center participated in several local and national sustainability awareness initiatives.

LIGHTS OUT PHILLY



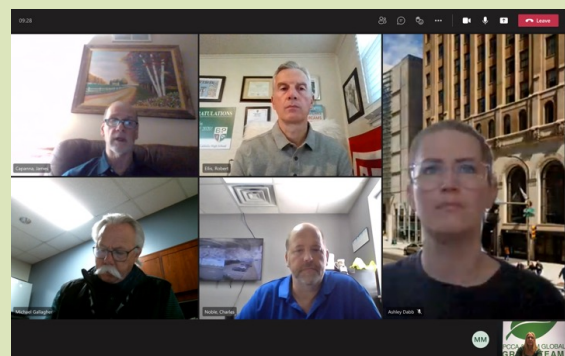
Lights Out is a national program with more than 32 participating cities. The “Lights Out Philly” Bird Safety program was launched in spring 2021. As a participant, the Pennsylvania Convention Center reduced its lighting schedule for the migratory seasons (April 1 to May 31 and August 15 to November 15), between 12 am and 6 am.

EARTH HOUR 2021



The Pennsylvania Convention Center also commemorated Earth Hour on March 27, 2021. From 8:30 pm to 9:30 pm, the facility turned off all nonessential lighting.

EARTH MONTH AND EARTH DAY 2021



The Pennsylvania Convention Center celebrated Earth Month during the facility’s monthly Green Team Meetings held on April 21, 2021.

Part of the Earth Month celebrations included the commemoration of Earth Day on April 22, 2021. Due to the pandemic this past year, Earth Day celebrations were held virtually with the facility’s waste management partner, Republic Services, who conducted a webinar, showcasing their single stream plant operations and automation technology which is used to sort, consolidate, package and re-purpose the Center’s single stream.

2021 PROJECTS

ESCO PROJECT

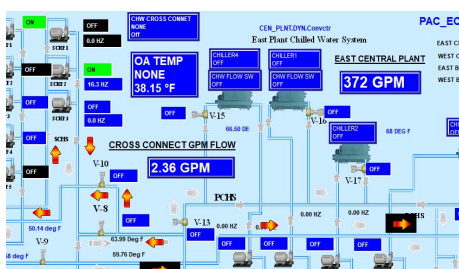
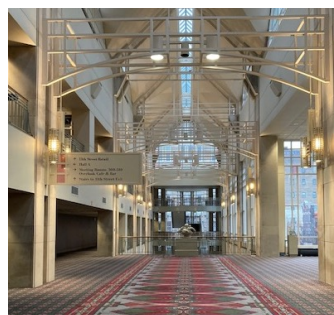
The Energy Services Company (ESCO) project with the Pennsylvania Convention Center Authority (PCCA), in partnership with SIEMENS, completed its second year of significant energy upgrades throughout the facility.

As a result of the progress of this project and our energy operational measures. To date, as a result of the progress of this project and our energy operational measures, we reduced electricity and natural gas consumption by 4.5% in 2021. Through the ESCO project we also recycled 1.26 tons of C&D material.

Project Highlights Include:

LED Lighting Retrofits

LED lighting fixtures and lamps were completed this past year throughout the exhibit halls, hallways, offices and back of house areas.

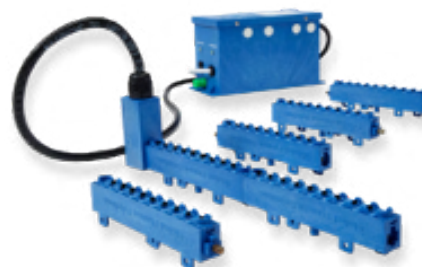


East Central Plant and West Central Plant Hot Water and Chilled Water Loop Interconnection

Hot water and chilled water lines were installed to connect the Center's two central plants. The interconnection allows the Center to run one plant rather than two plants reducing utility costs and run-hours on the central plant equipment. This project was commissioned and went online in May 2021.

Bipolar Ionization Technology

Advanced air purification and filtration for forty (40) air handling units was completed in the convention center. The equipment eliminates biological growth and musty odors by providing stable outside air intake and ion technology that targets contaminants at the molecular level. The equipment also helps with energy savings. Phase I of the air monitoring sensor installation was substantially completed in December 2021 with Phase II to be completed in July 2022.

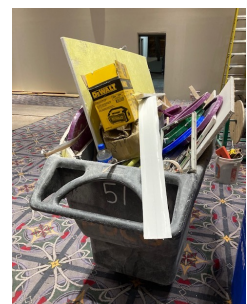
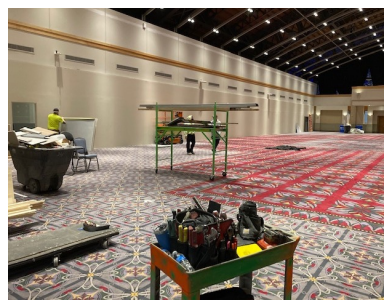


CAPITAL PROJECTS

In 2021, the Pennsylvania Convention Center's capital program consisted of upgrades to the facility including phases three and four of restroom renovations, escalator modernization, ballroom upgrades, and carpet and equipment replacement. The Center required its capital project contractors to recycle construction and demolition (C&D) materials, electronic waste (E-waste) and retired equipment. Below are some of this year's featured capital projects with the recycling tonnage captured.

Renovation Construction C&D

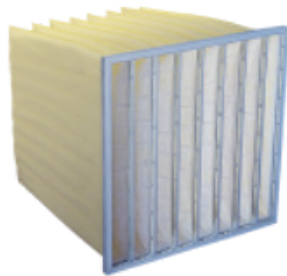
Projects including restroom renovations, carpet replacement and ballroom upgrades recycled 84.45 tons.



BUILDING PROJECTS

Air Filter Upgrade

Transitioned HVAC air filters from a MERV-13 to a higher efficiency MERV-14 pocket filters in the expansion.



Electronic E-Waste

1.2 tons of E-waste consisting of lamps, batteries, ballasts, and monitors were recycled.



Digester

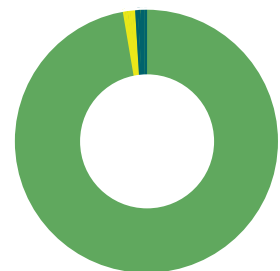
The Center's main kitchen digester system was upgraded with two new BioHitech food waste digesters which allows food service facilities to process organic waste on-site.



It is a clean, green biological solution that reduces waste staging while eliminating heavy truck hauling altogether.

Project Recycling (tons)

- Renovations - 84.45
- E-Waste - 1.2
- ESCO-1.26



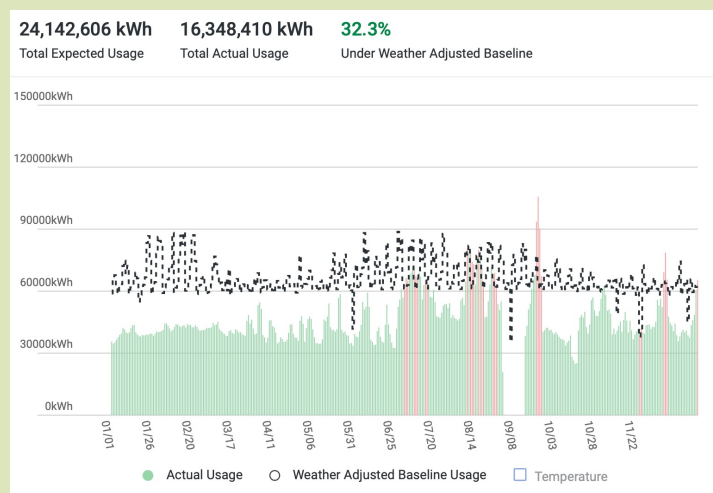
UTILITY USAGE AND PERFORMANCE

The Pennsylvania Convention Center is subject to variations in occupancy and utility demand based on events held at the Center. The Center's engineering staff contribute to utility efficiency by scheduling HVAC and lighting needs for our clients to match their schedules and needs.

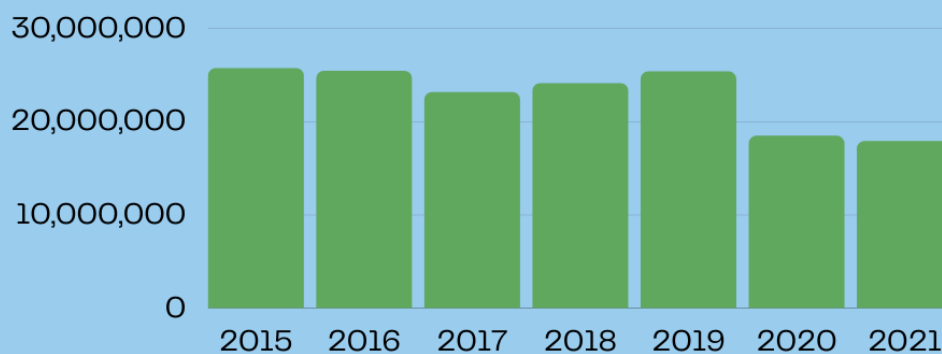
Utility use types at the Center are Electricity, Natural Gas and Water usage.

ELECTRIC

Electricity usage continued to trend downward in 2021 due to fewer events held during the pandemic, energy efficient upgrades from the ESCO project, and seasonality. The electricity usage was 4.5% lower than in 2020 and 32.2% under the weather adjusted baseline in 2021.



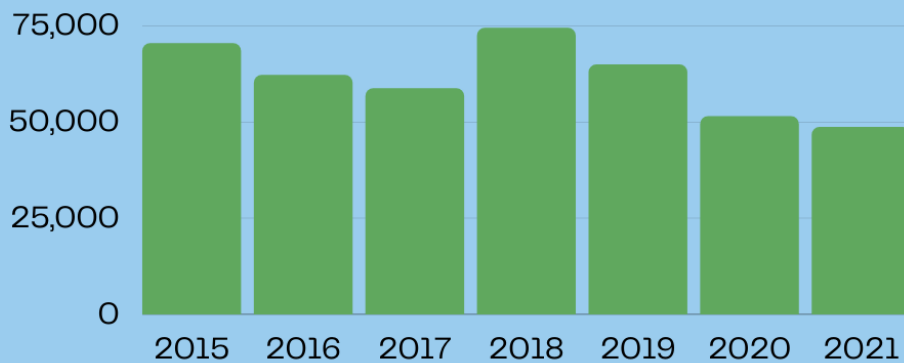
Electric Usage (kWh)



NATURAL GAS

Natural gas usage had a similar lower trend of 4.5% in 2021 as compared to 2020. Again, fewer events, weather and the energy efficient ESCO project played a big role in the reduction. The natural gas usage reduction is consistent with the electricity usage for the 2021 to 2020 comparison.

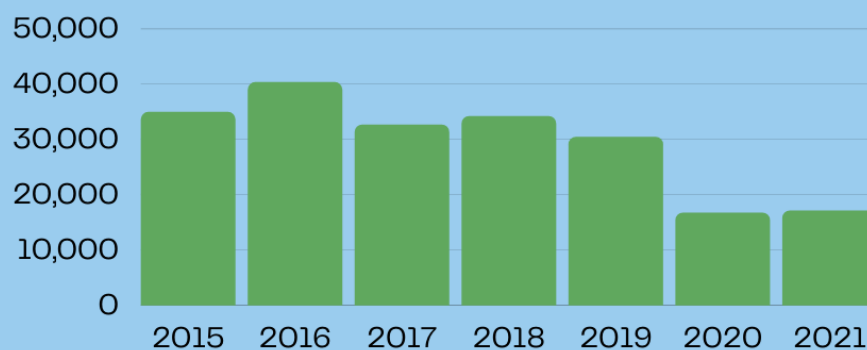
Natural Gas Usage (DTH)



WATER

Water increased slightly by 2.3% in 2021 as compared to 2020 due to the central plant interconnection beginning in May 2021. Commissioning the system required testing and filling the interconnected lines to become operational. HVAC systems including the hot water & chiller water lines and cooling towers are a large contributor in our water usage.

Water Usage (CCF)



GREEN ENERGY

In 2018, the PCCA/ASM Global entered into a retail electricity supply agreement through which 25% of all electricity supplied to the Center is provided from Green-e certified renewable energy sources, in this case, wind energy. One REC represents the environmental benefit of producing 1 megawatt hour (MWh) of electricity with a renewable energy source. In 2021, the PCCA negotiated and secured a new 60-month agreement to continue services with Constellation Energy and we have doubled our percentage of renewable energy to 50%, which will come from Green-e-certified sources.

DEMAND RESPONSE

The Pennsylvania Convention Center participates in a “demand response” program. Demand response programs aim to lower electricity consumption during high usage days. In the summer months, the increased electricity load due to air conditioning overwhelms the power grid and can cause brown and black outs. Through financial incentives, large scale users of electricity are asked to cut down on electricity usage (including for cooling) during key hours of peak usage days. The Center's enrollment for 2021 was less due to seasonality and fewer events. Overall, the Center has been rated as a highly reliable performer since 2013 delivering 77% of the megawatt commitments.

Pennsylvania Convention Center Authority: Demand Response History



WASTE USAGE AND RECYCLING PERFORMANCE

The Pennsylvania Convention Center enjoyed a record year for diverting 248.48 tons or 63.5% from landfill. The results were influenced by our sustainable event commitments and sorting efforts by our in house staff and external contractors. Although events were lower this year, Natural Products Expo East 2021 played a big part in our success. Construction and Demolition (C&D) continued to be the largest contributor to our recycling streams in 2021 at 242.36 tons. Single stream made up 6.12 tons and Landfill at 142.63 tons.

C&D is an ideal recycling stream byproduct for the convention center industry. The ASM Global and Republic Services partnership at the Pennsylvania Convention Center are leading the way in this trend nationwide. Booth material, shrink wrap, furniture, metals, wood, pallets, carpets, foam board, padding and small volumes of brick, blocks, and concrete pieces are accepted as C&D from the Pennsylvania Convention Center.

2021 YTD Diversion

Recycling Impact

Total Tons Recycled **248.48**

Based on tons of recycled material, your decision to recycle has had the following impact on the world.

Thank you for joining with Republic Services to create a cleaner greener tomorrow.

1.11 kW-hrs of Electricity saved (Millions)

35 Households' Annual Energy Consumption

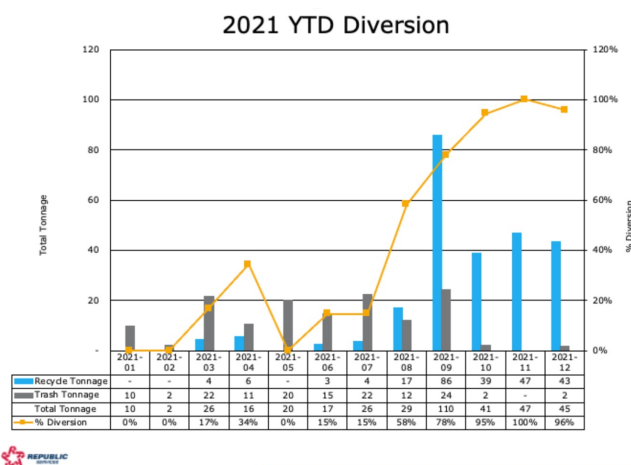
30,390 Gallons of Oil saved
3,777 MBTU Net Energy Reduction (Million British Thermal Units)

790 Total Greenhouse Gas Reduction in Metric Tons:
This is the equivalent to one of the following:
89,697 Gallons of Gasoline saved
145 Passenger Cars not driven for one year:

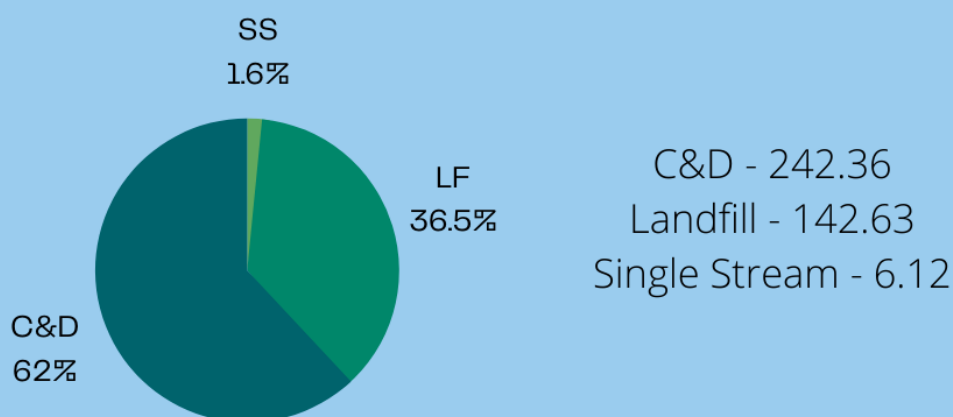
1.74 Gallons of Water saved (Millions)

869 Landfill Airspace saved (cu yd)

2,981 Number of Mature Trees saved



Recycling Streams (tons)



CLEANING AND PROCUREMENT

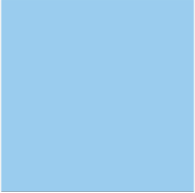
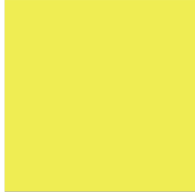
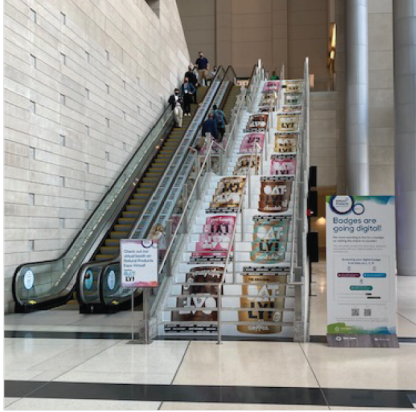
The Pennsylvania Convention Center's cleaning and purchasing decisions aim to decrease the environmental impact of maintaining the facilities while promoting a healthy indoor environment. This includes reducing packaging, recycling, and purchasing materials that have sustainable qualities.

Indoor Air Quality (IAQ) is affected by the products used at the facility. The Center focuses on only using products and equipment that do not emit toxic compounds that become part of the occupants' breathing space.

The IAQ management process involves reducing air pollutants at their sources. Volatile organic compounds (VOCs), commonly found in paints, adhesives, and furniture, are a source of IAQ-related health issues.

The Pennsylvania Convention Center's Sustainable Purchasing Policy sets purchasing practices and minimum standards for all purchases whenever possible. The policy covers all purchases necessary for the Center including office supplies, furniture, electronics, lighting, and cleaning products.

The 2021 key metrics from ARAMARK purchases, which are tracked separately, are as follows: 35% of ARAMARK'S cleaning products were ecologically friendly; and 67% of the disposable serve-ware used was compostable, exclusive of bottled water and juices.



PENNSYLVANIA CONVENTION CENTER
PACONVENTION.COM

