



**Pennsylvania  
Convention Center**  
*PHILADELPHIA*

---

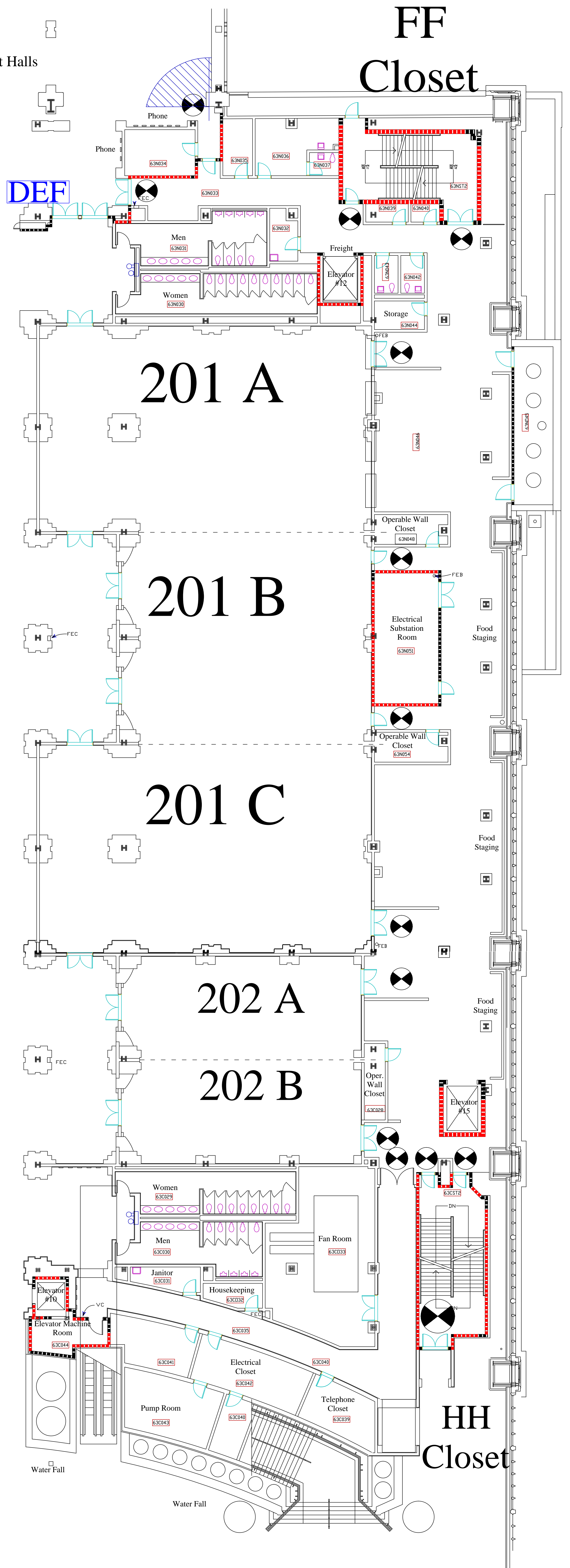
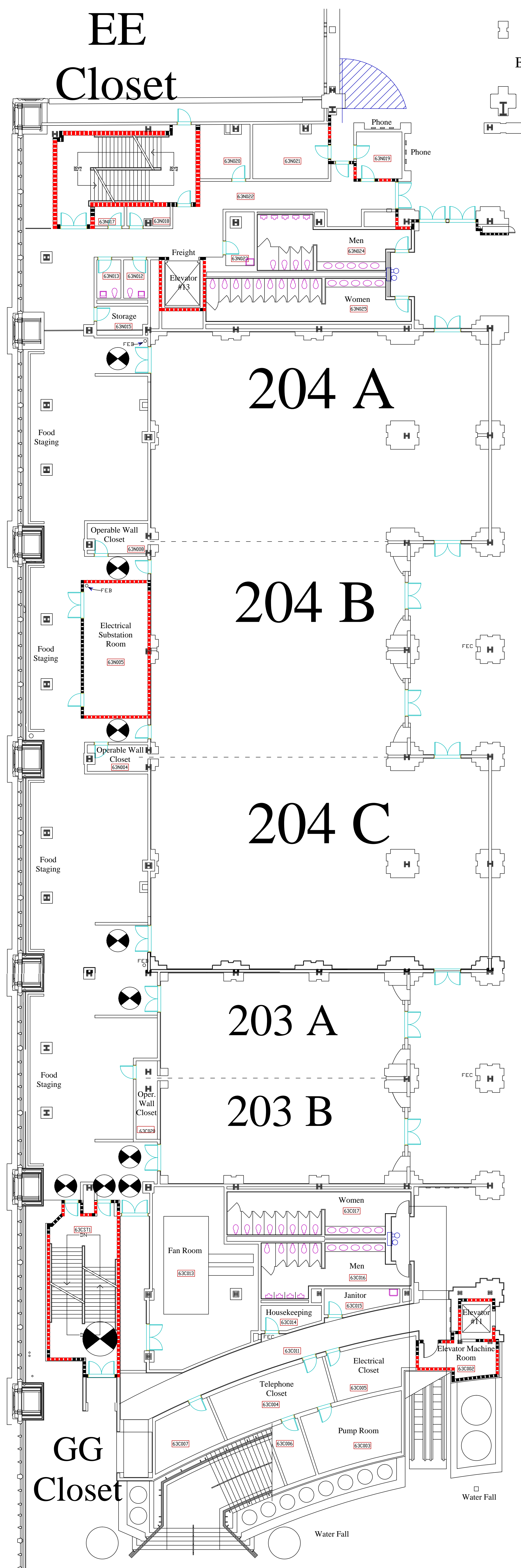
AN  MANAGED FACILITY

# **PENNSYLVANIA CONVENTION CENTER FLOORPLANS**

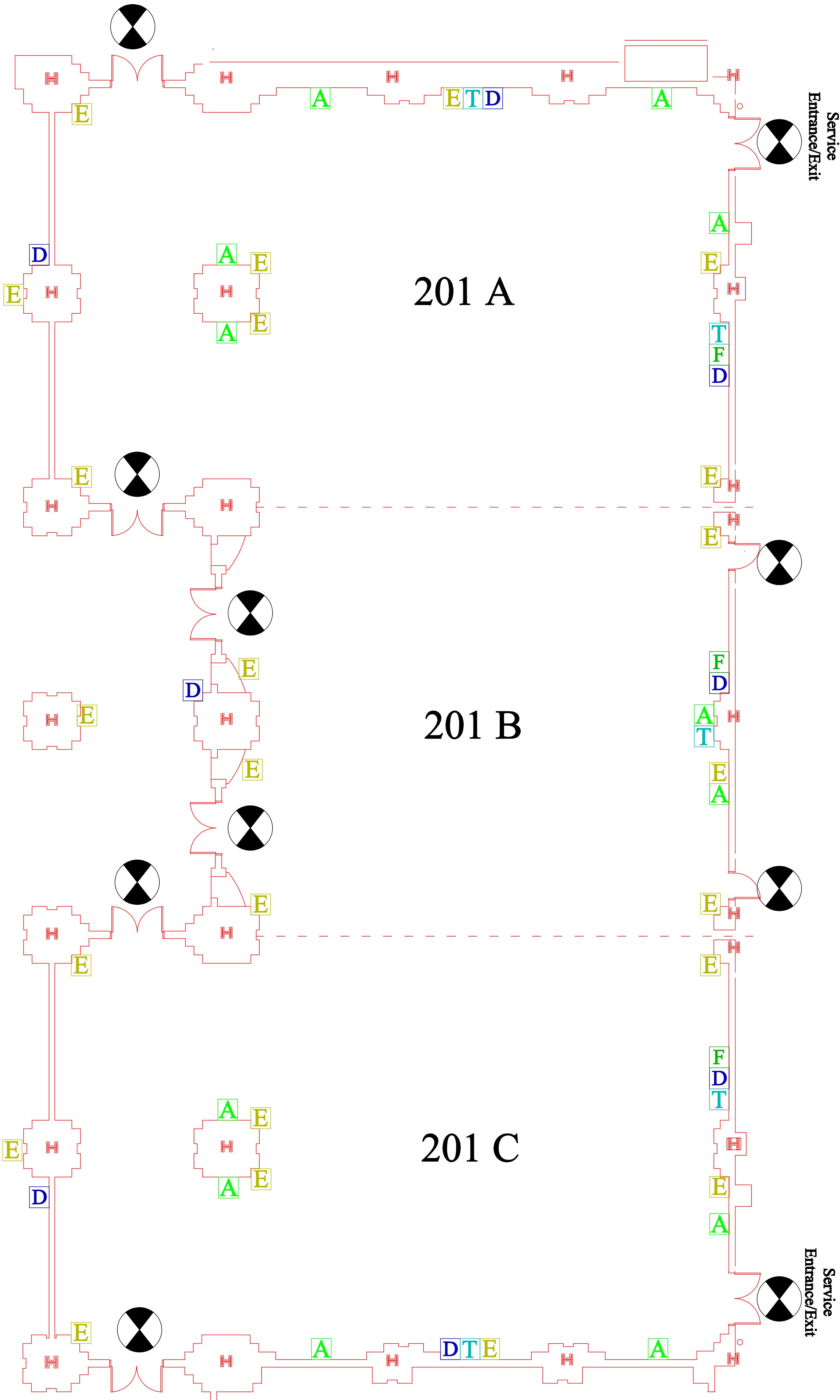
**EXHIBIT HALL LEVEL KIT**

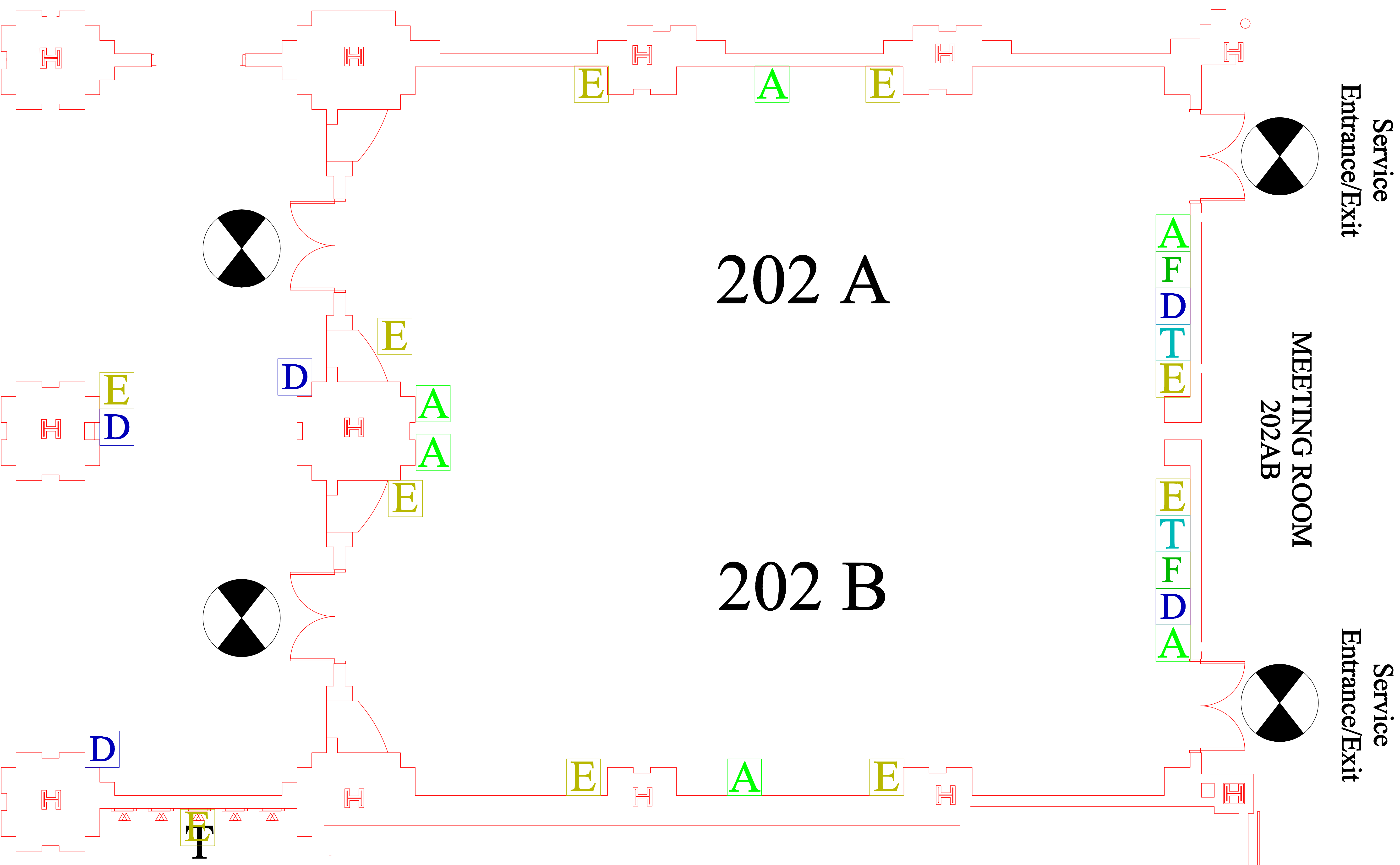
**200 Level Meeting Rooms**

**Halls ABCDE, Grand Hall**



15' Clearance must be maintained in any direction from emergency exit doorways





**D** Category 6 data jack

**F** Fiber Optic jack

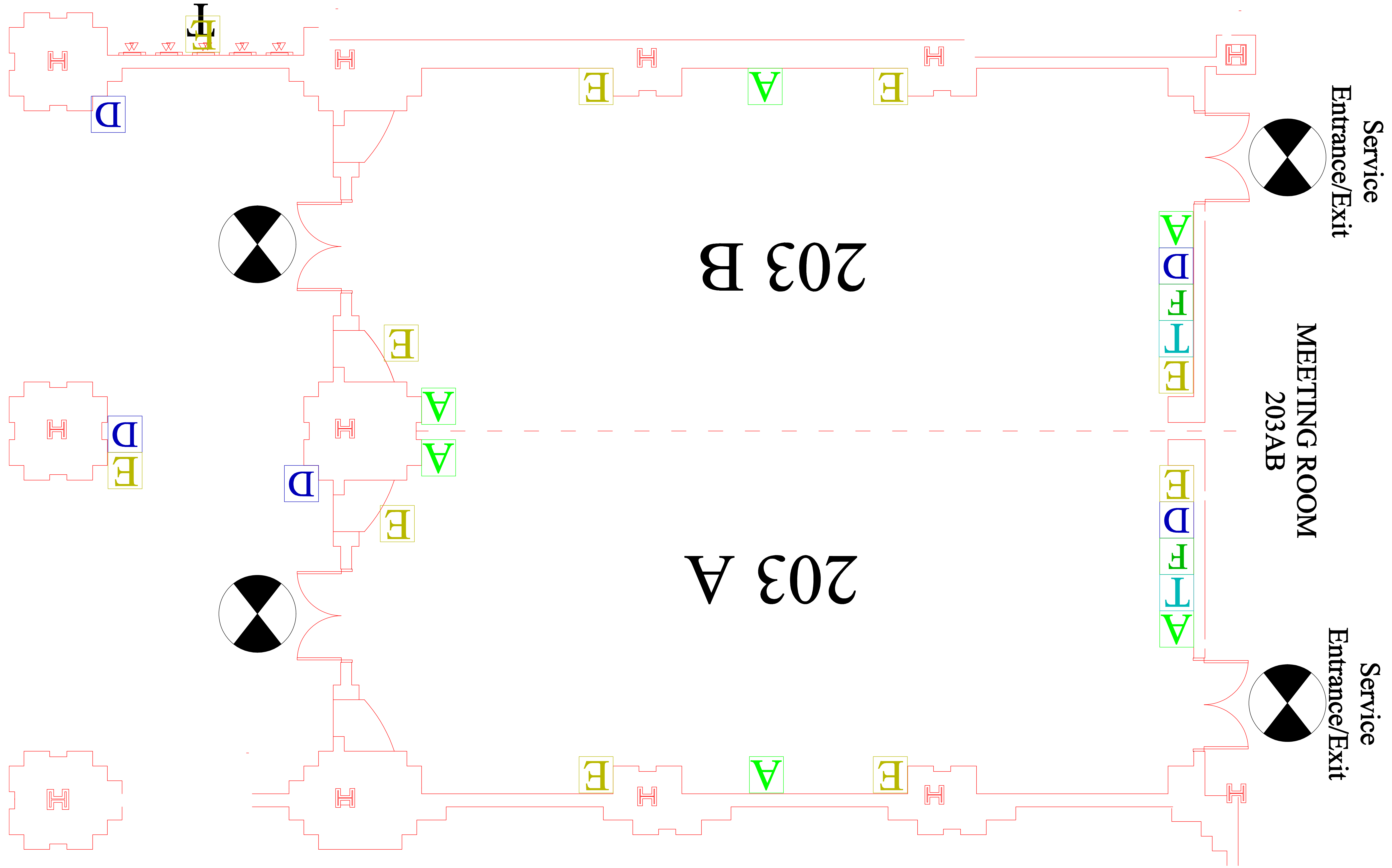
**A** Audio Visual tie line

**T** Telephone jack

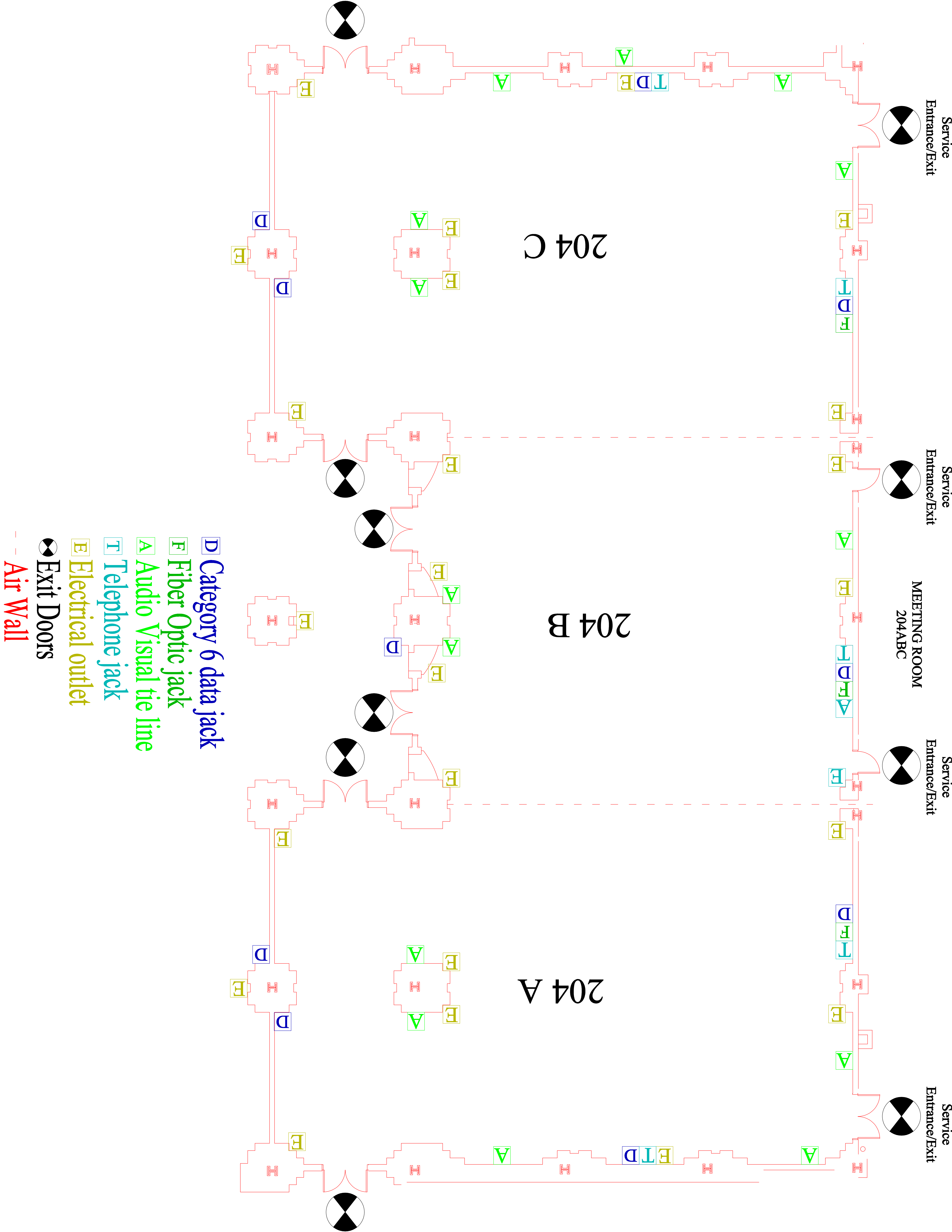
**E** Electrical outlet

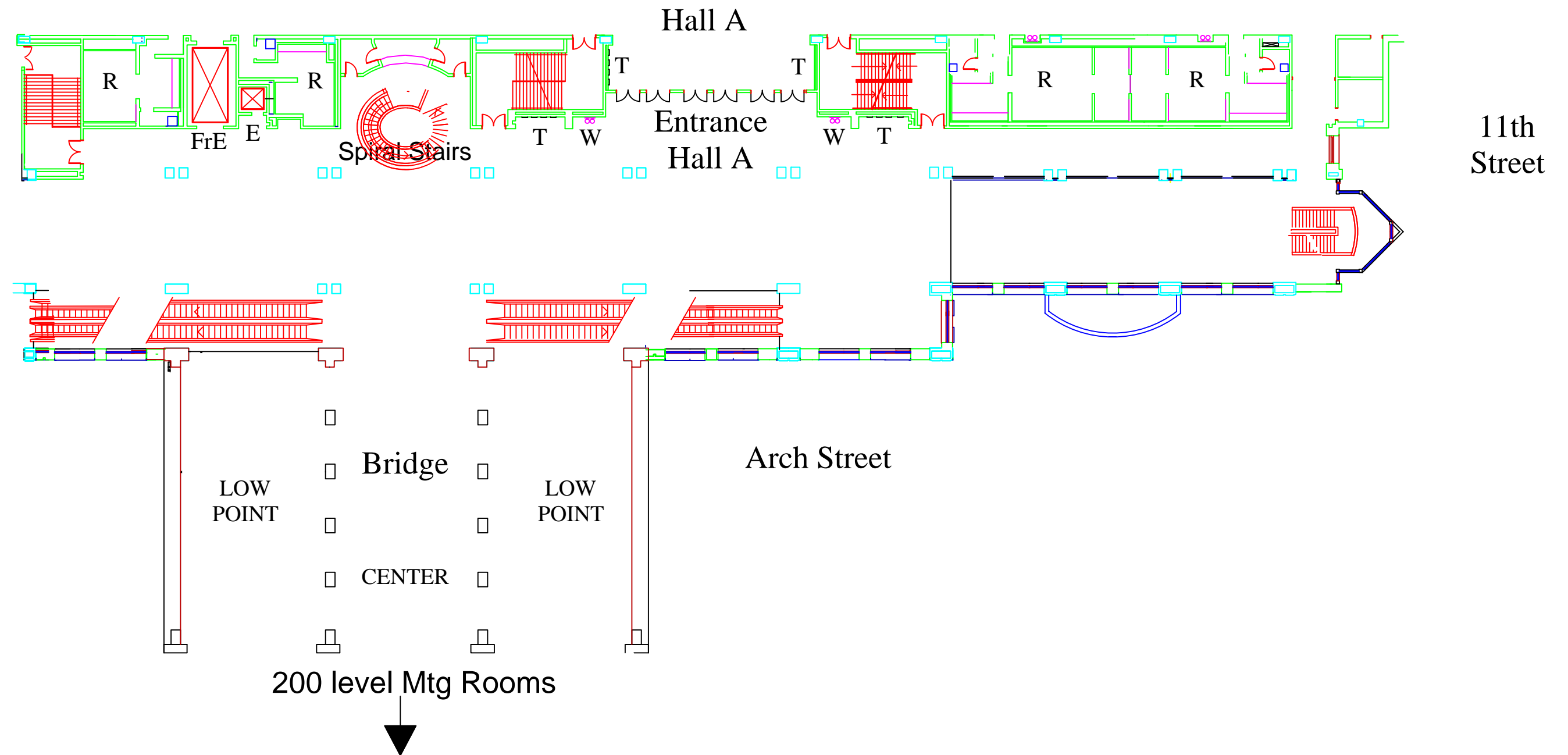
**X** Exit Doors

**---** Air Wall



- D Category 6 data jack
- F Fiber Optic jack
- A Audio Visual tie line
- T Telephone jack
- E Electrical outlet
- Exit Doors
- Air Wall





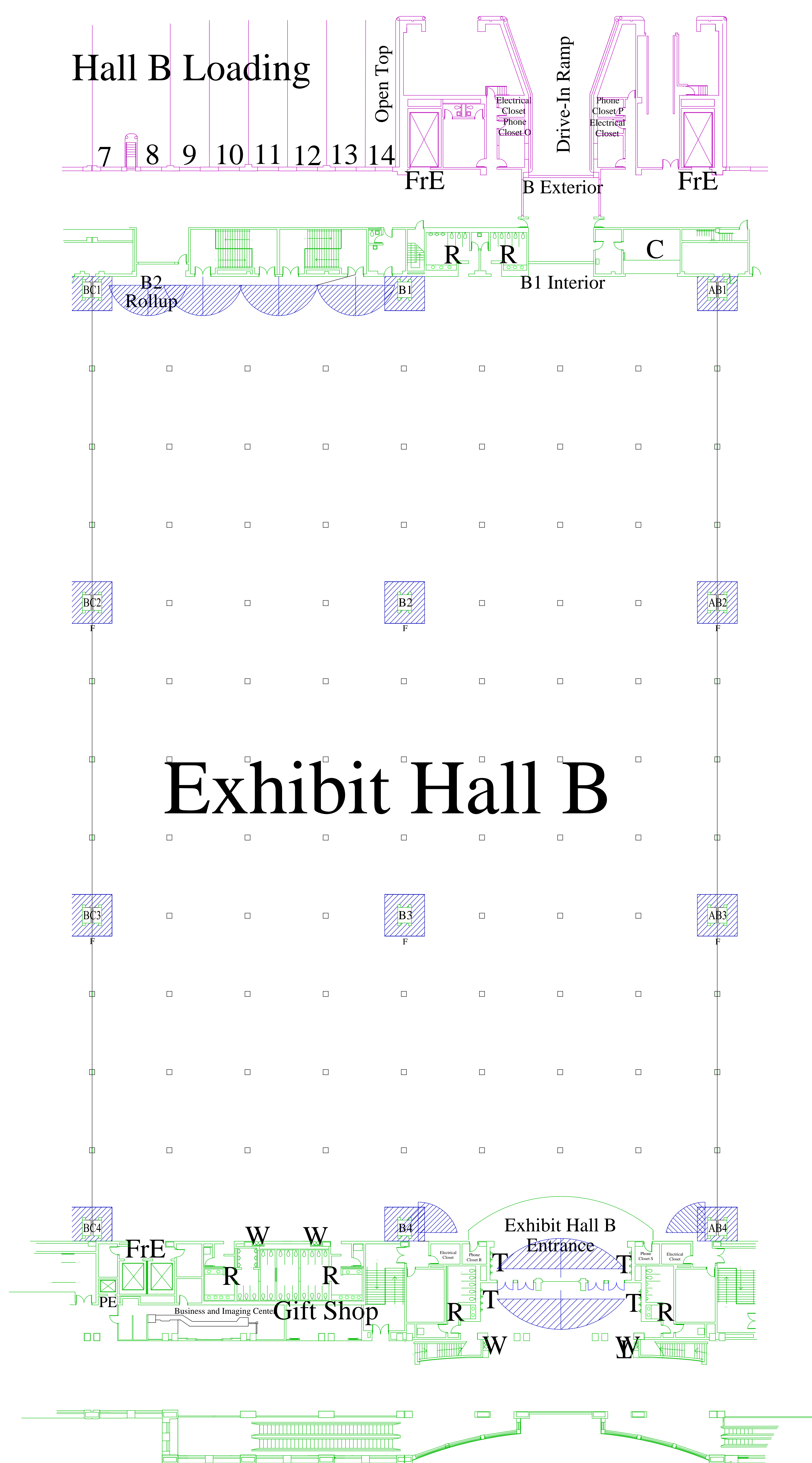
Ceiling Height: The low point is where the bridge and concourse meet is 8'  
 The high point is in the center of the concourse is 20'



NOTE: Shading around columns indicates a minimum clearance of 5' on each side that must be maintained for access to electrical services and fire hose connections.

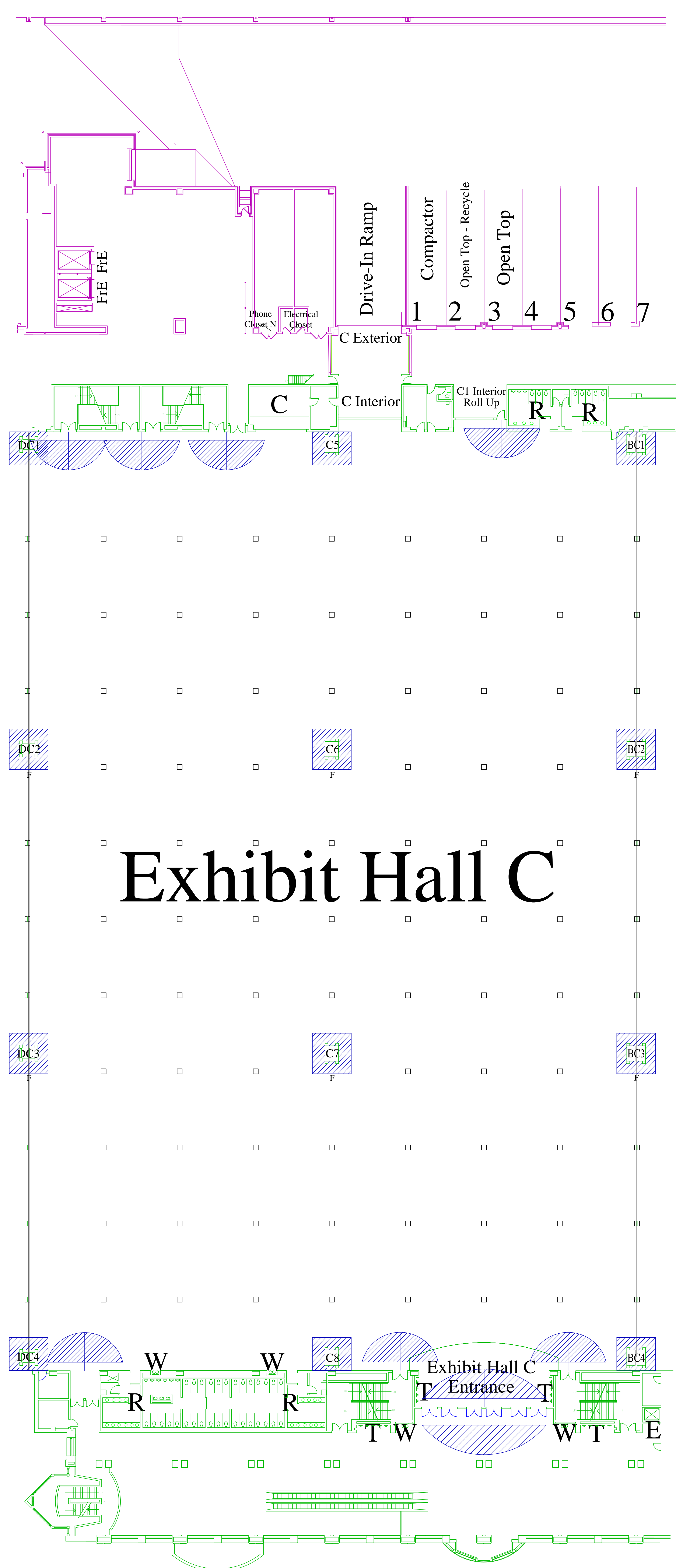
15' Clearance must be maintained in any direction from emergency exit doorways

Dimensions are approximate verify in field



NOTE: Shading around columns indicates a minimum clearance of 5' on each side that must be maintained for access to electrical services and fire hose connections.  
 15' Clearance must be maintained in any direction from emergency exit doorways

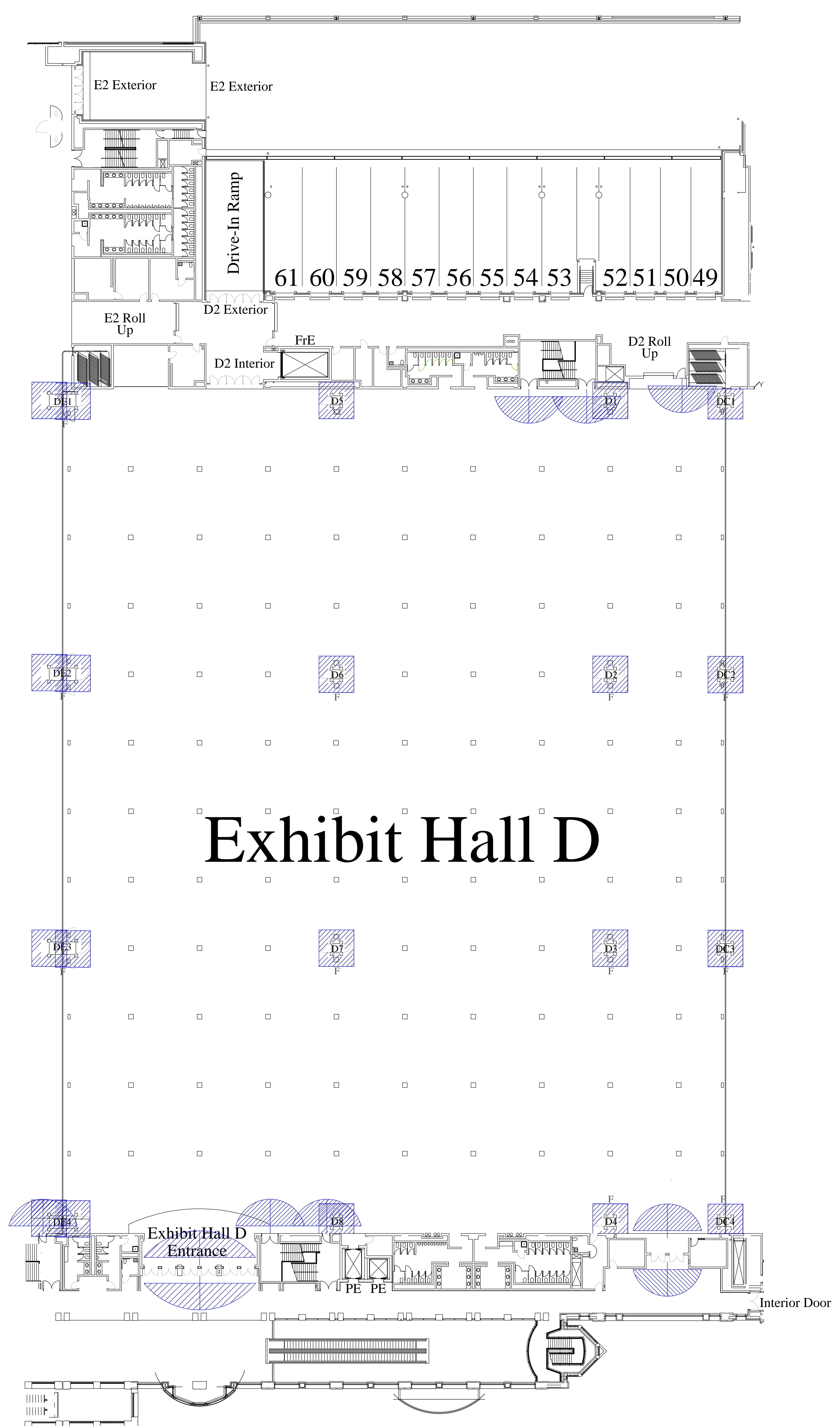
Dimensions are approximate verify in field



NOTE: Shading around columns indicates a minimum clearance of 5' on each side that must be maintained for access to electrical services and fire hose connections.

15' Clearance must be maintained in any direction from emergency exit doorways

Dimensions are approximate verify in field

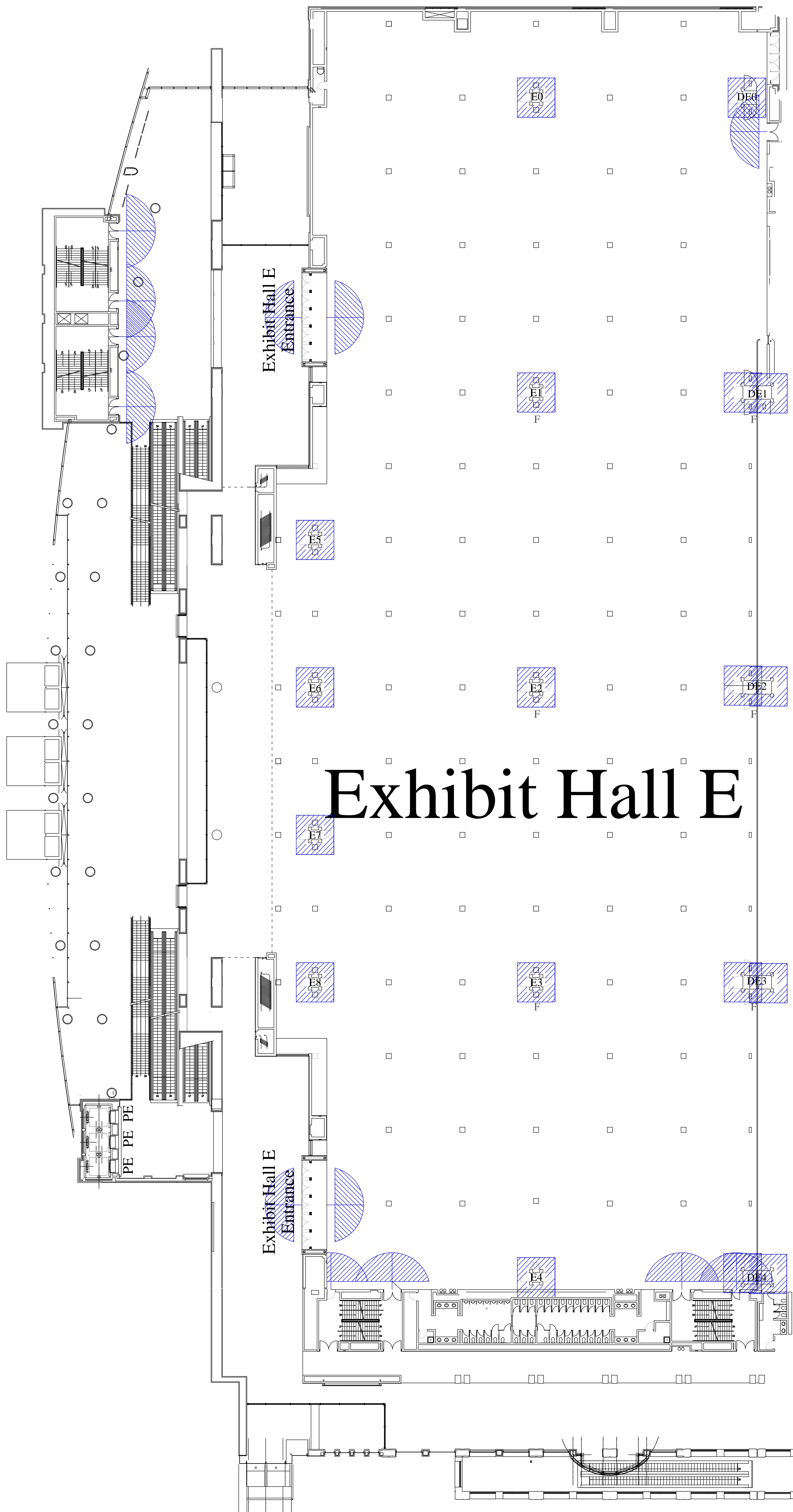


NOTE: Shading around columns indicates a minimum clearance of 5' on each side that must be maintained for access to electrical services and fire hose connections.

15' Clearance must be maintained in any direction from emergency exit doorways

Dimensions are approximate verify in field

Broad Street



NOTE: Shading around columns indicates a minimum clearance of 5' on each side that must be maintained for access to electrical services and fire hose connections.

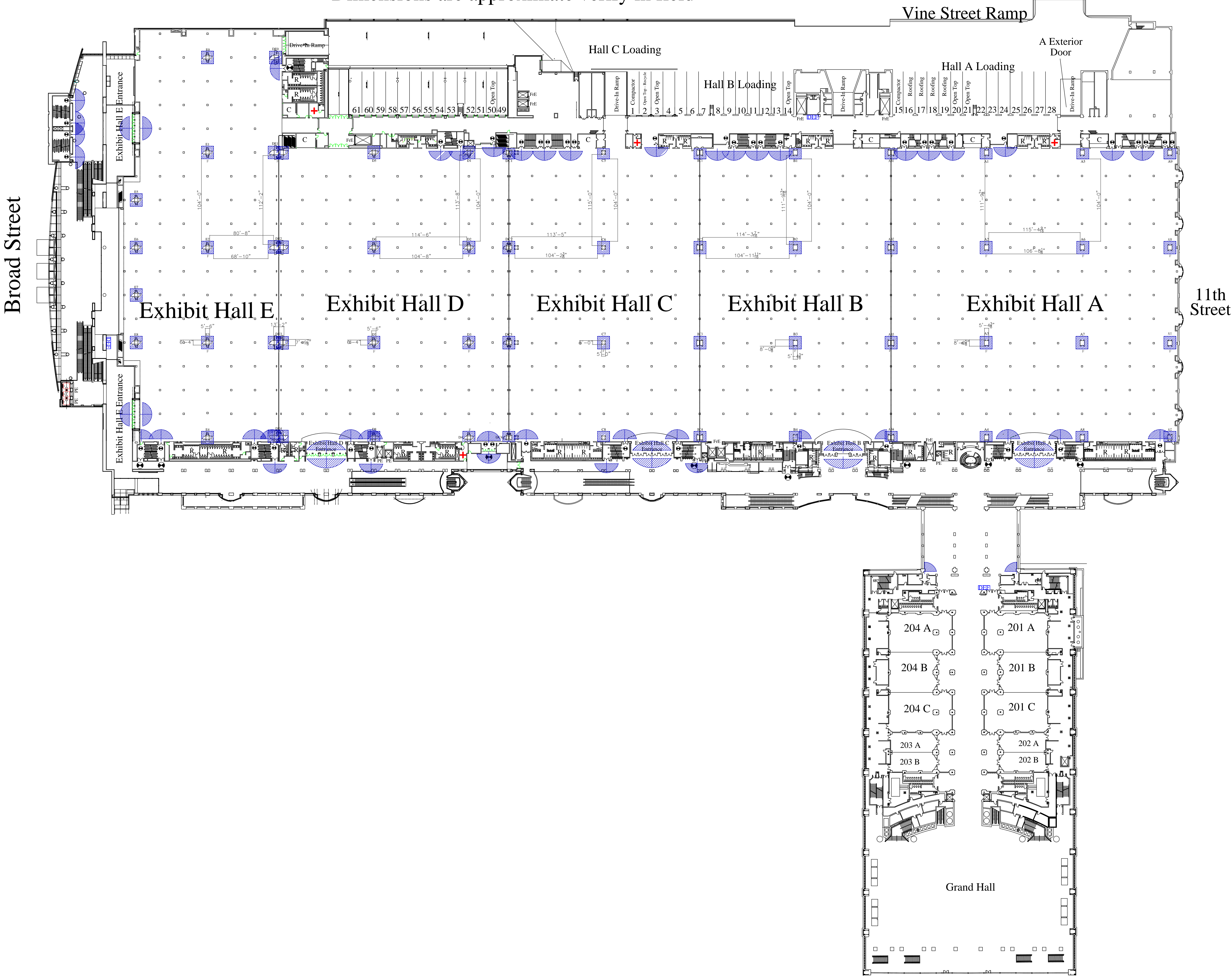
15' Clearance must be maintained in any direction from emergency exit doorways

Dimensions are approximate verify in field

NOTE: Shading around columns indicates a minimum clearance of 5' on each side that must be maintained for access to electrical services and fire hose connections.

15' Clearance must be maintained in any direction from emergency exit doorways

Dimensions are approximate verify in field



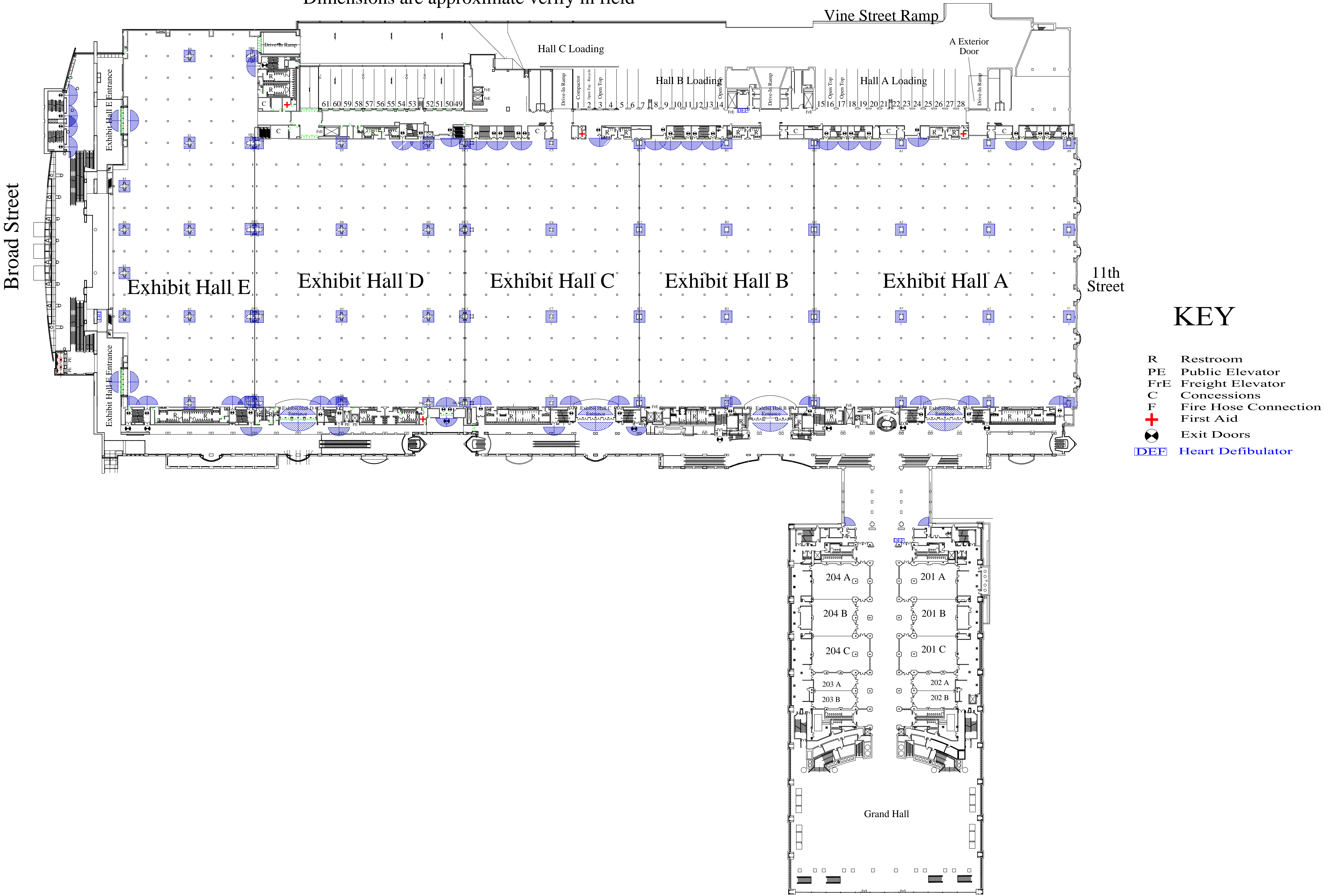
# KEY

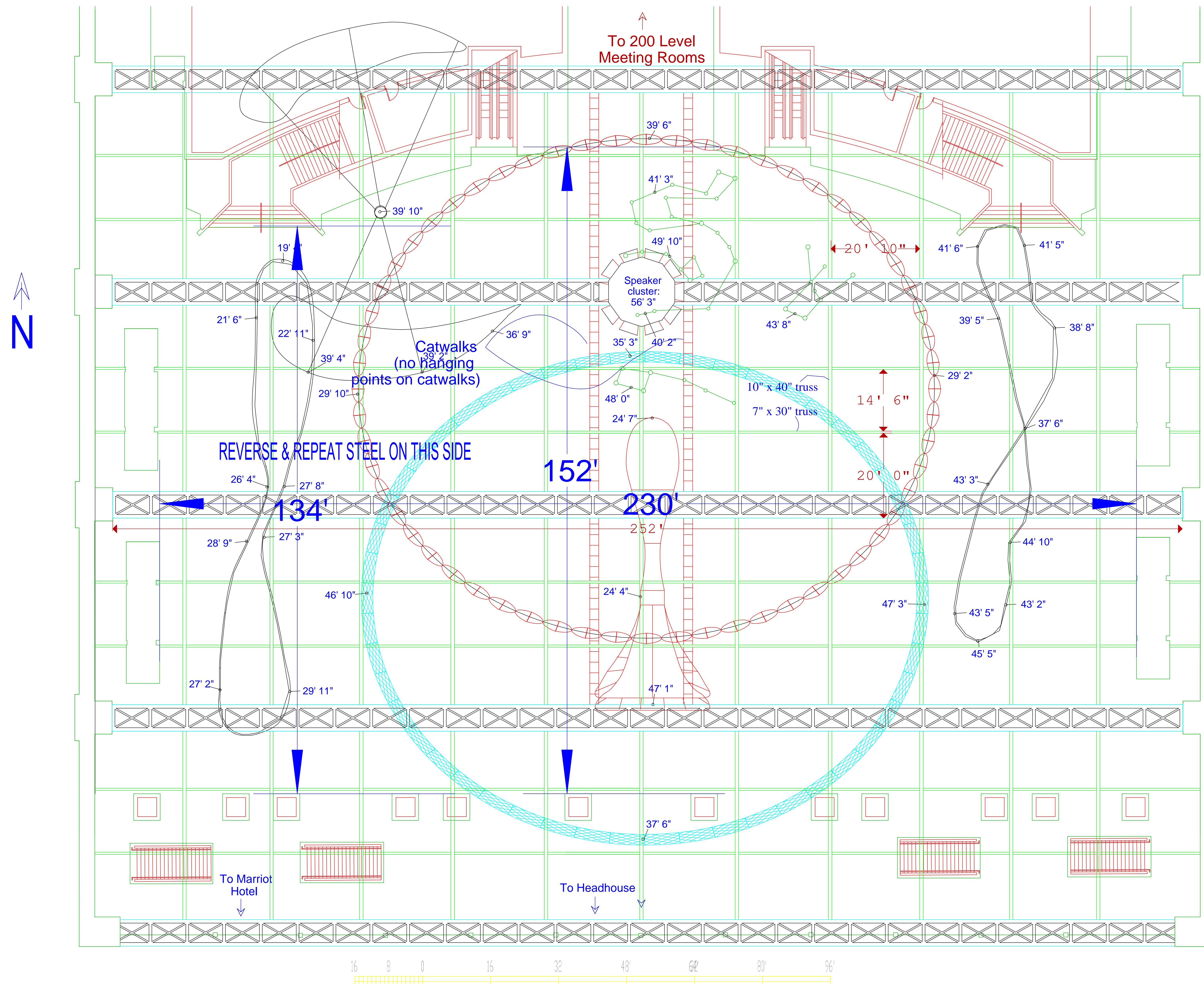
- R Restroom
- PE Public Elevator
- FrE Freight Elevator
- C Concessions
- F Fire Hose Connection
- + First Aid
- ⊗ Exit Doors
- DEF Heart Defibrillator

NOTE: Shading around columns indicates a minimum clearance of 5' on each side that must be maintained for access to electrical services and fire hose connections.

15' Clearance must be maintained in any direction from emergency exit doorways

Dimensions are approximate verify in field





NOTES:

This is a rough representation of the artwork in the Grand Hall. A site visit is strongly recommended if any rigging is planned.

All heights indicated are low clearances in respective areas.

Accuracy of Drawing:  
Heights accurate +/- 3"  
Location of artwork accurate +/- 36"

- 1) All rigging drawings to be approved in advance by PCCA.
- 2) Rigging drawings to include total weight of suspended unit, weight per point, and bridling details.
- 3) 4' x 4' box trusses load of 4,000# single case.
- 4) All other points load 300# per case.
- 5) Three cases between major truss spans.
- 6) ALL DIMENSIONS APPROXIMATE.

# Grand Hall - Reflected Ceiling Plan with Artwork

---

## Pennsylvania Convention Center

Date: 5/7/99

Scale: 1" = 1"

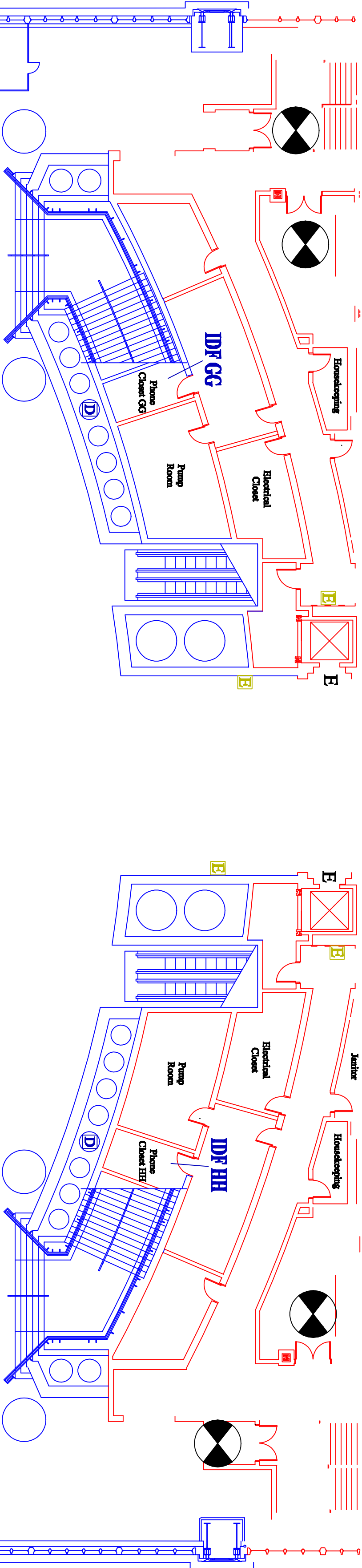
Drawn By: Conrad Bender

Room Number:

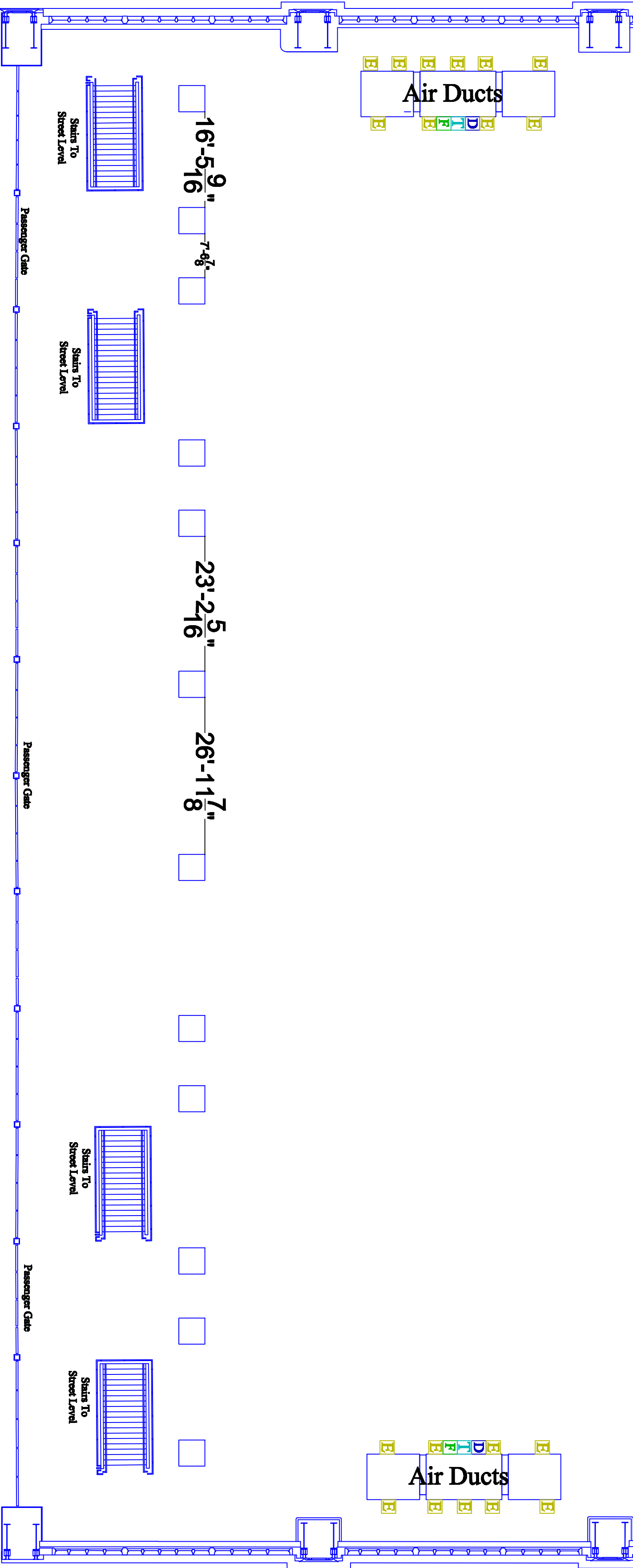
## Grand Hall

File Name:

Ghart full



# Grand Hall



- D** Category 6 data jack
- F** Fiber Optic jack
- A** Audio Visual tie line
- T** Telephone jack
- E** Electrical outlet
- DHF** Heart Defibrillator
- Exit Doors**