

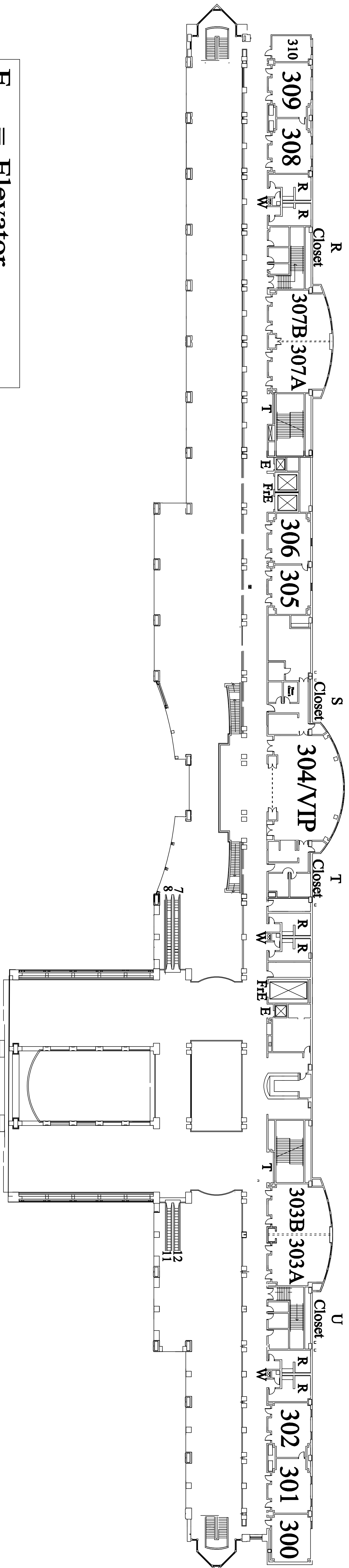


**Pennsylvania
Convention Center**
PHILADELPHIA

AN  MANAGED FACILITY

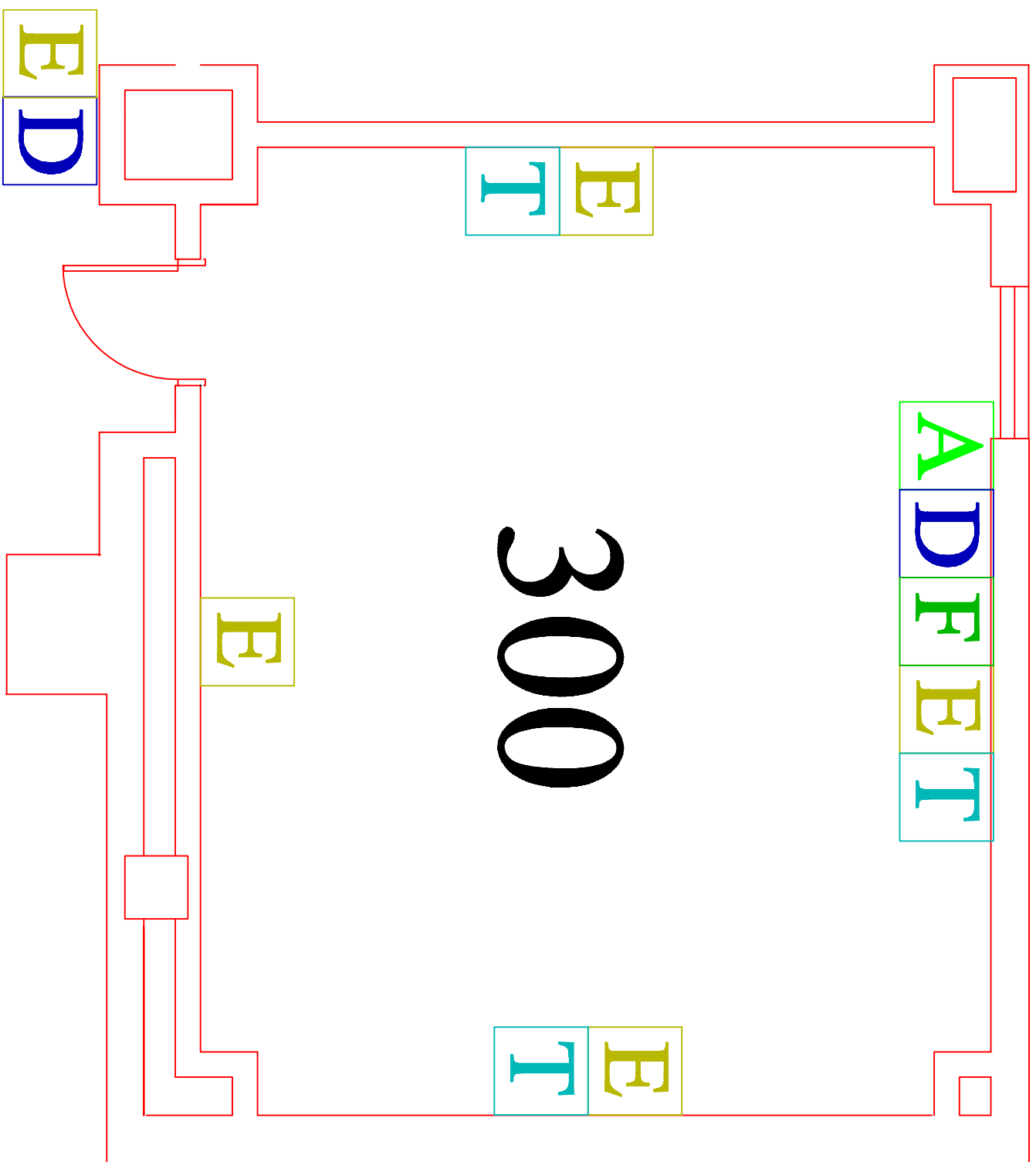
PENNSYLVANIA CONVENTION CENTER FLOORPLANS

300 Level Meeting Rooms and Overlook Cafe



- E** = Elevator
- FrE** = Freight Elevator
- R** = Rest Room
- T** = Telephone
- W** = Water Fountain

MEETING ROOM 300



D Category 6 data jack

F Fiber Optic jack

A Audio Visual tie line

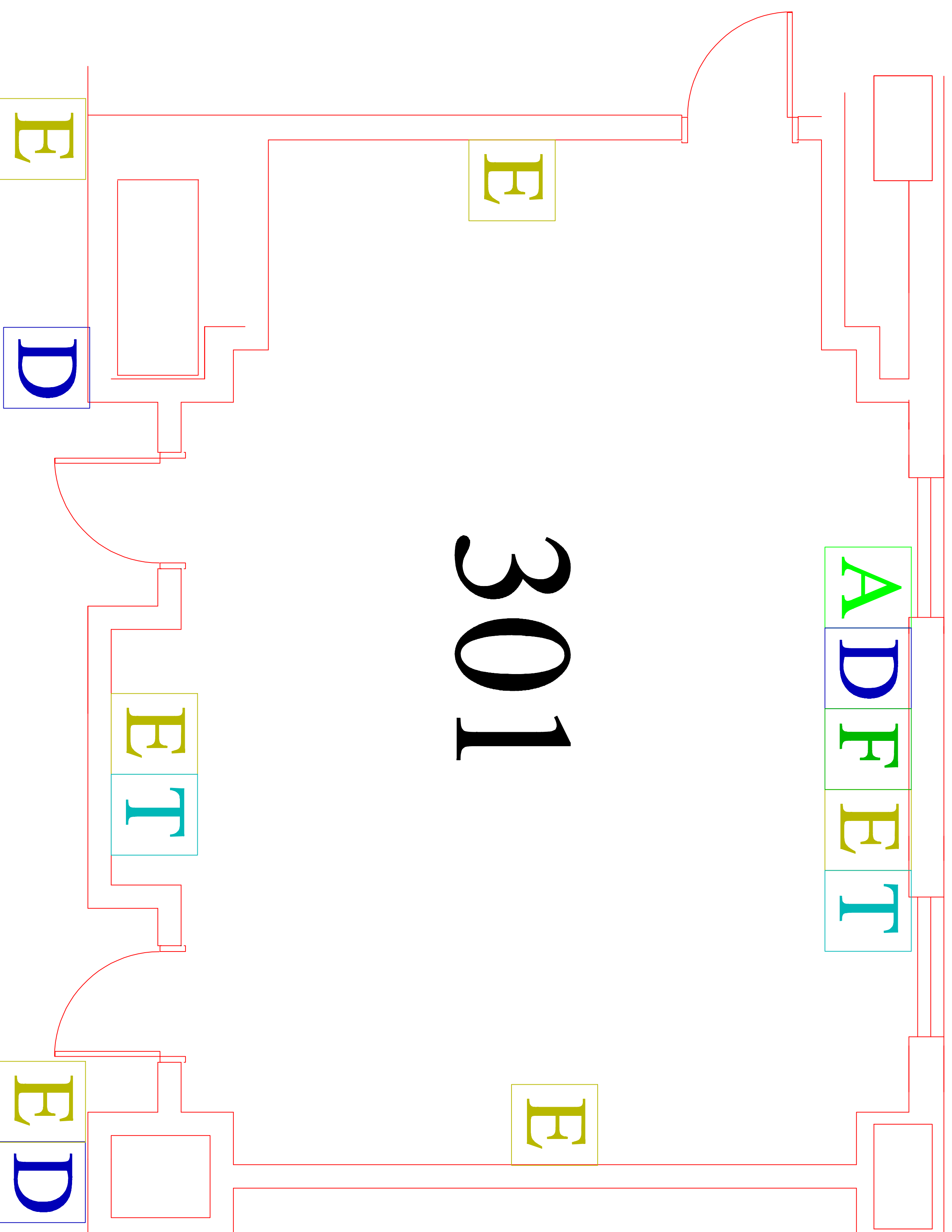
T Telephone jack

E Electrical outlet

Fire Code Capacity: 90

Ceiling Height: 8' 7 1/2"

MEETING ROOM 301



301

D Category 6 data jack

F Fiber Optic jack

A Audio Visual tie line

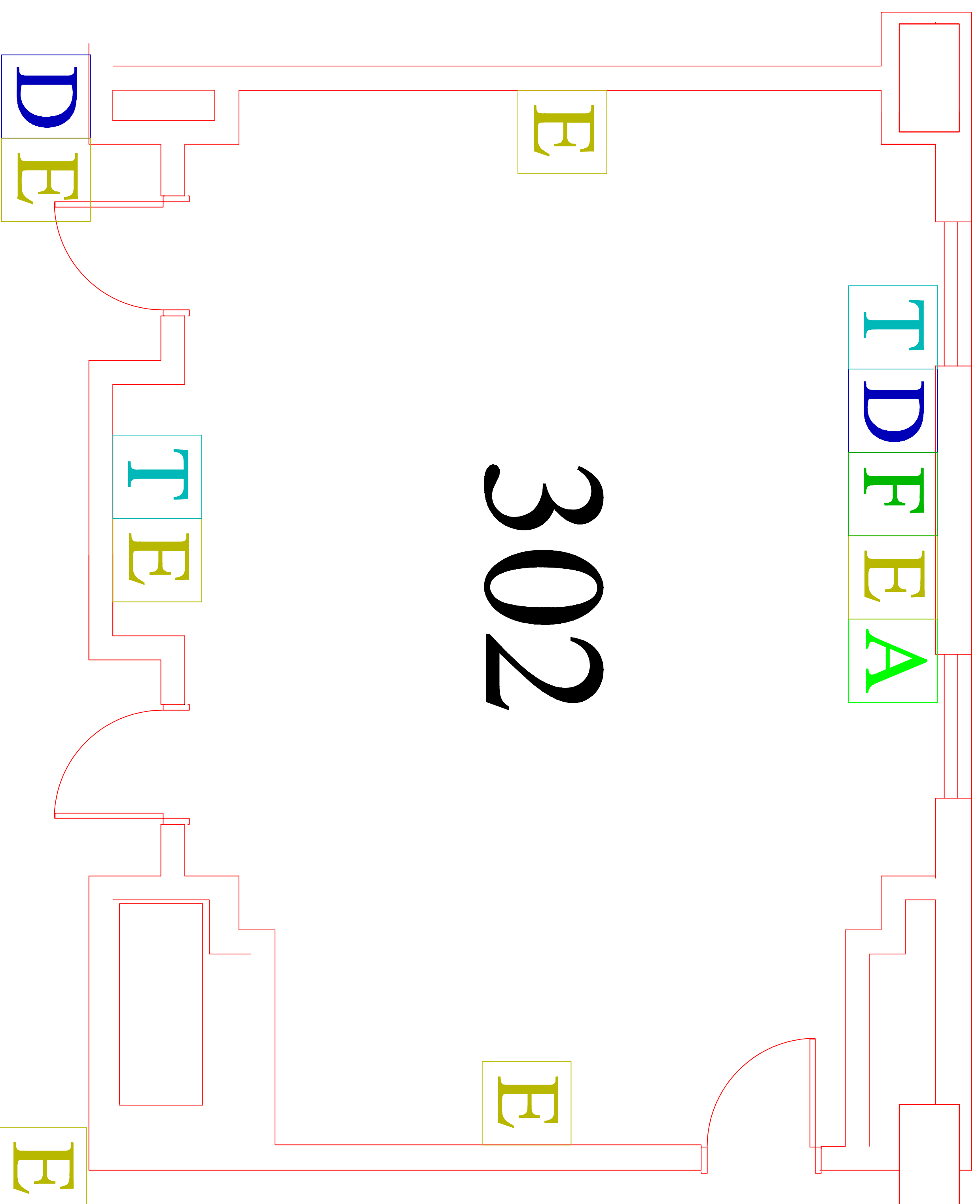
T Telephone jack

E Electrical outlet

Fire Code Capacity: 87

Ceiling Height: 8' 8"

MEETING ROOM 302



D Category 6 data jack

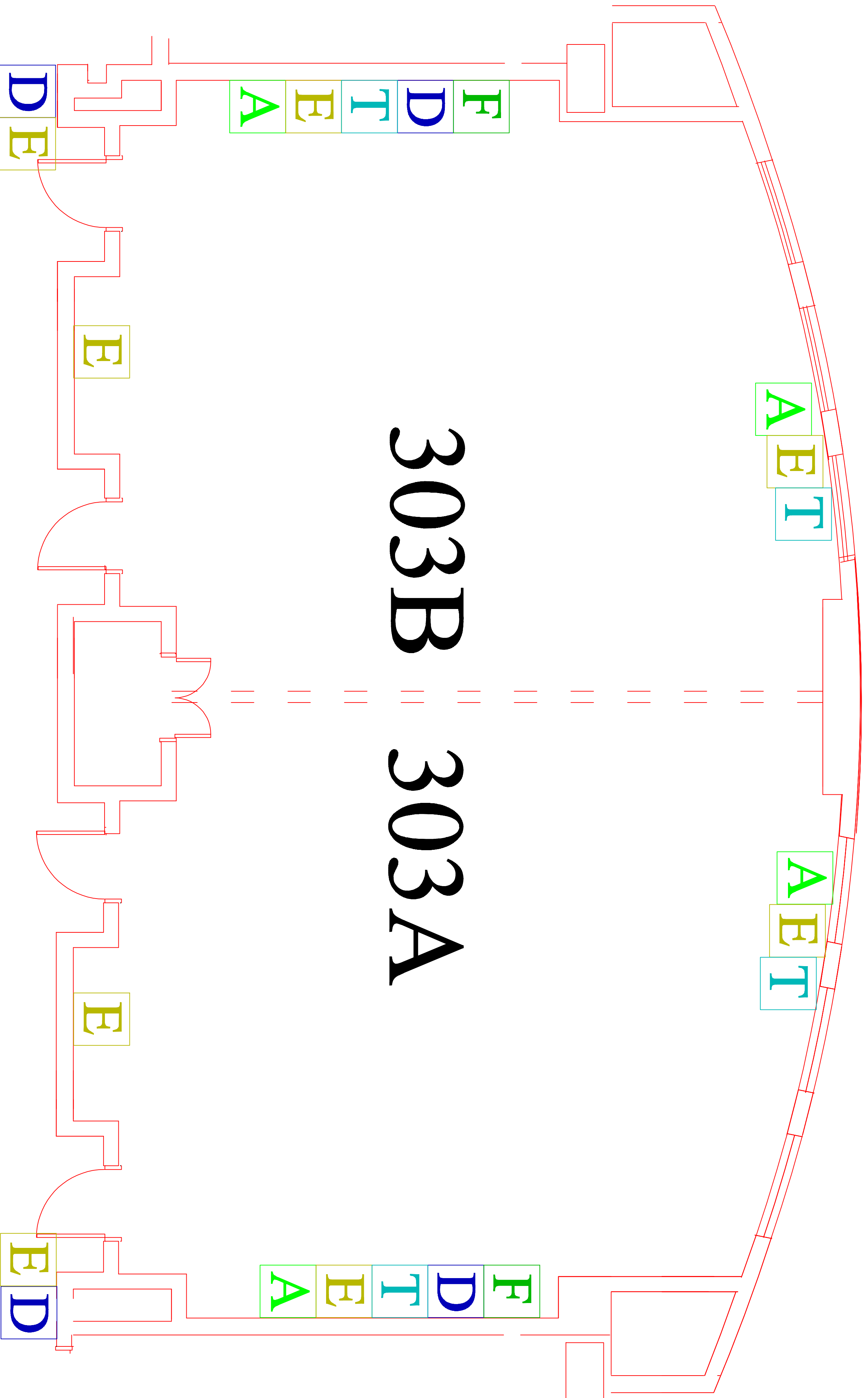
F Fiber Optic jack

A Audio Visual tie line

T Telephone jack

E Electrical outlet

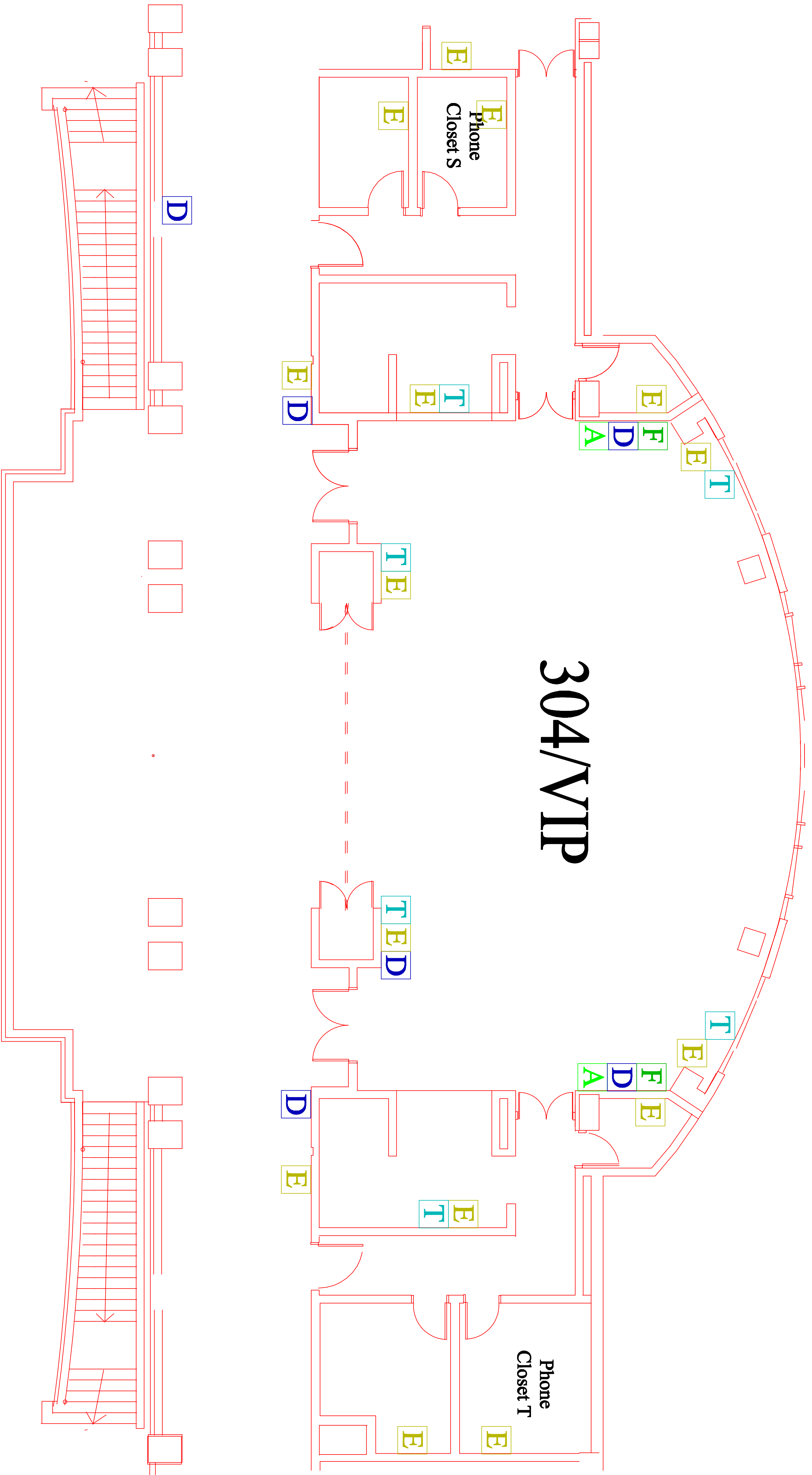
MEETING ROOM 303 AB



303B 303A

Fire Capacity: 326
Ceiling Height: 8' 7 5/8"

- D** Category 6 data jack
- F** Fiber Optic jack
- A** Audio Visual tie line
- T** Telephone jack
- E** Electrical outlet
- Airwall**

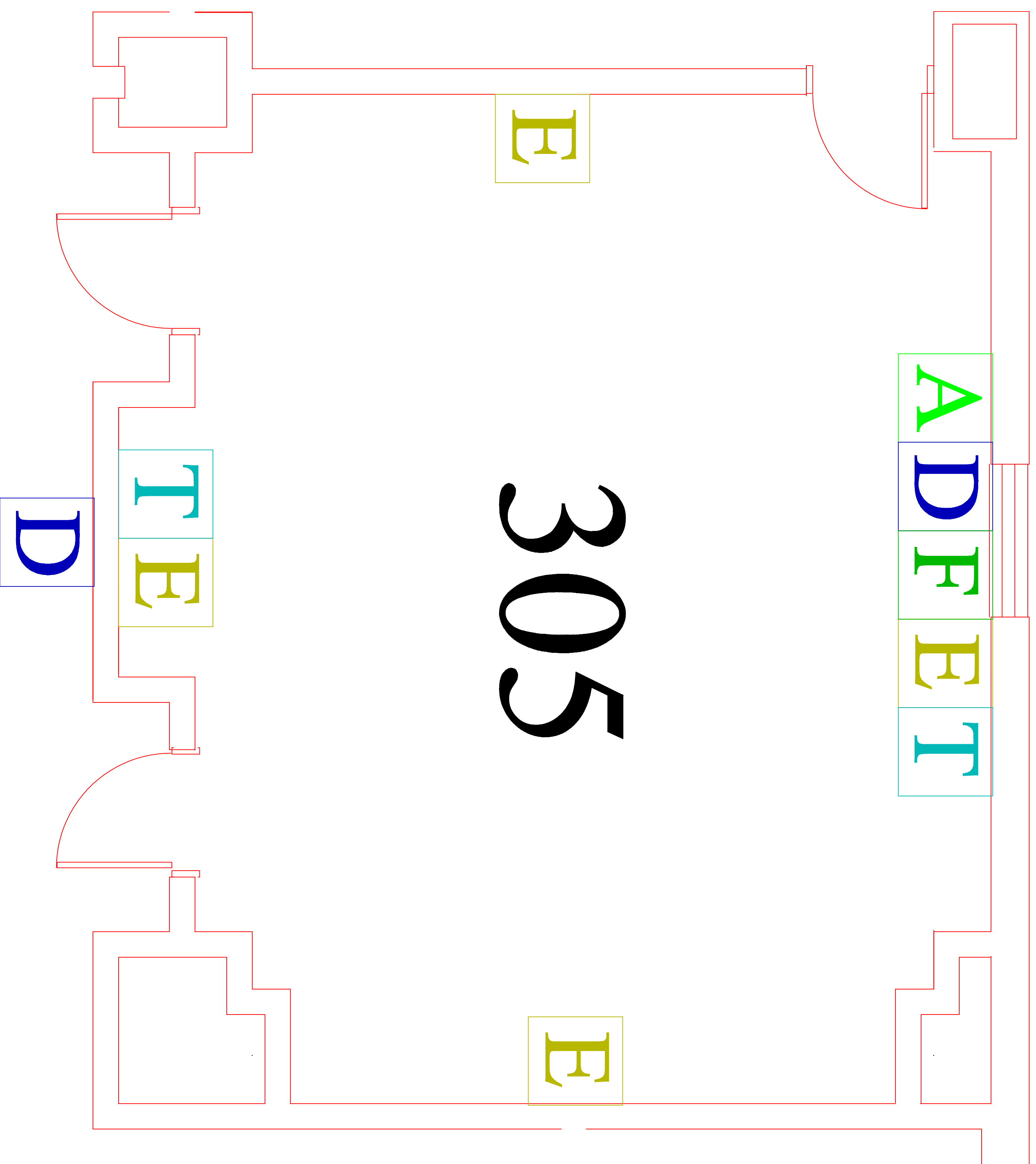


304/VIP

- D Category 6 data jack
- F Fiber Optic jack
- A Audio Visual tie line
- T Telephone jack
- E Electrical outlet
- Airwall

Fire Capacity: 296
 Ceiling Height: 8' 7"

MEETING ROOM 305



D Category 6 data jack

F Fiber Optic jack

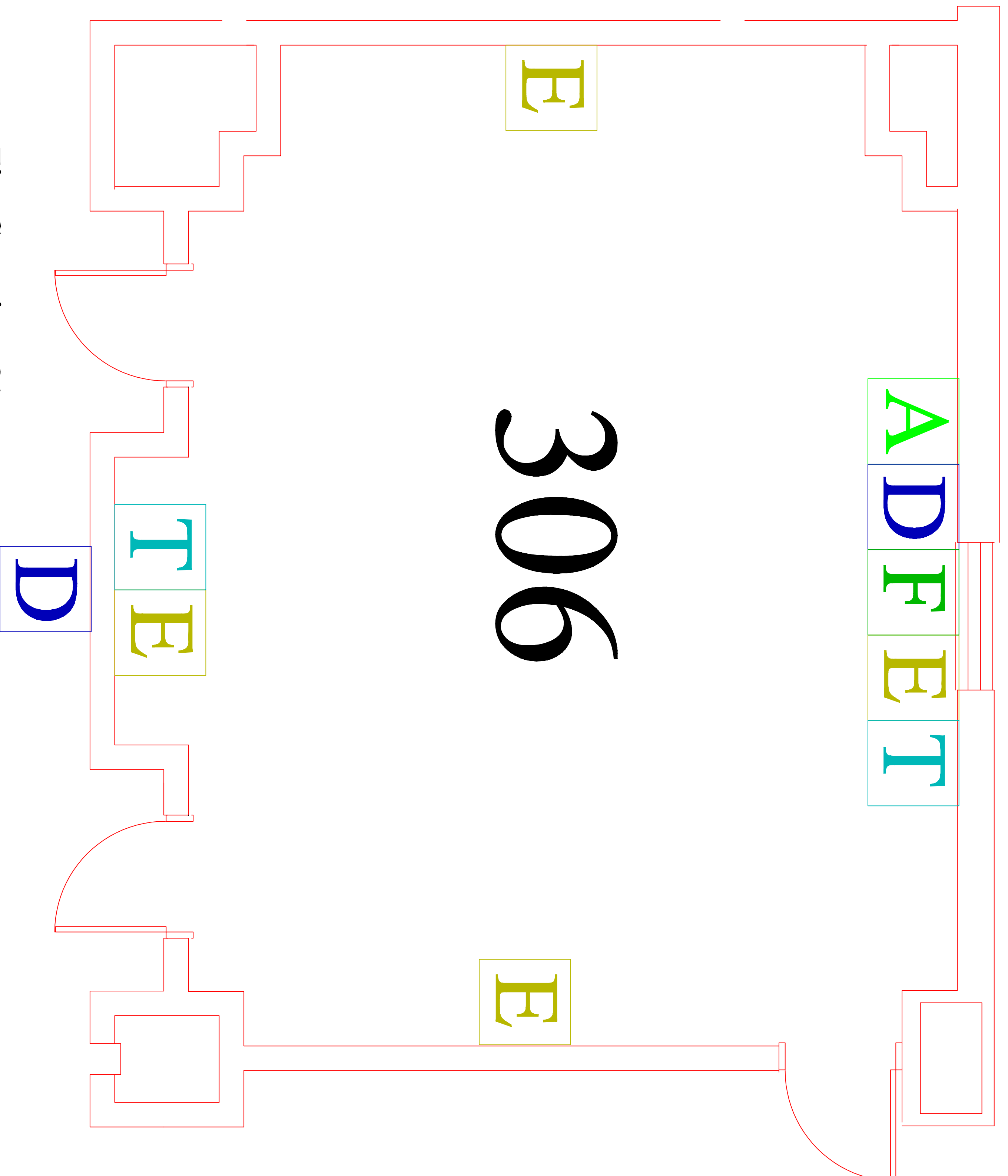
A Audio Visual tie line

T Telephonenumber jack

E Electrical outlet

Fire Capacity: 81

MEETING ROOM 306



306

D Category 6 data jack

F Fiber Optic jack

A Audio Visual tie line

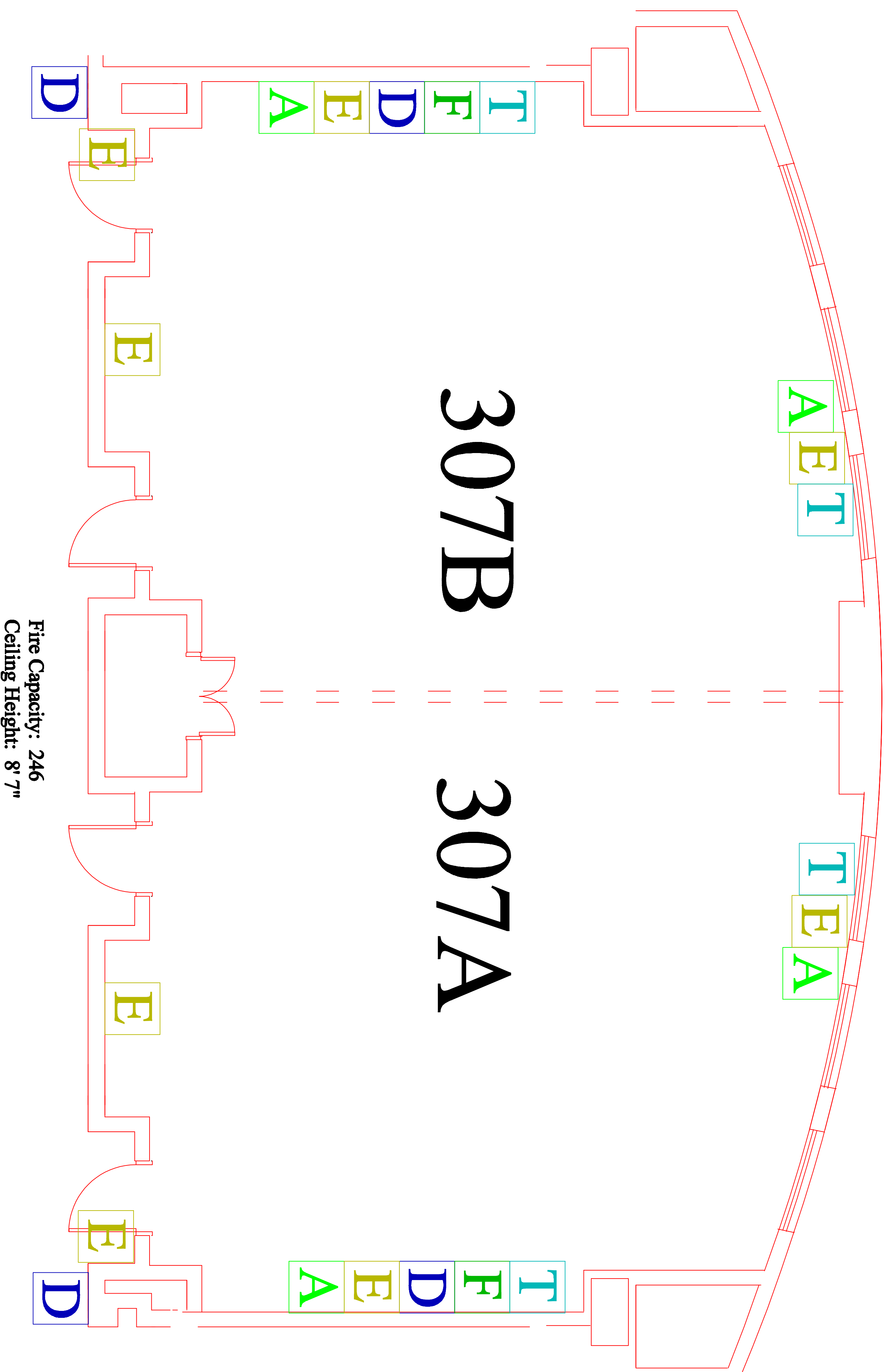
T Telephone jack

E Electrical outlet

Fire Capacity: 81

Ceiling Height: 8' 7"

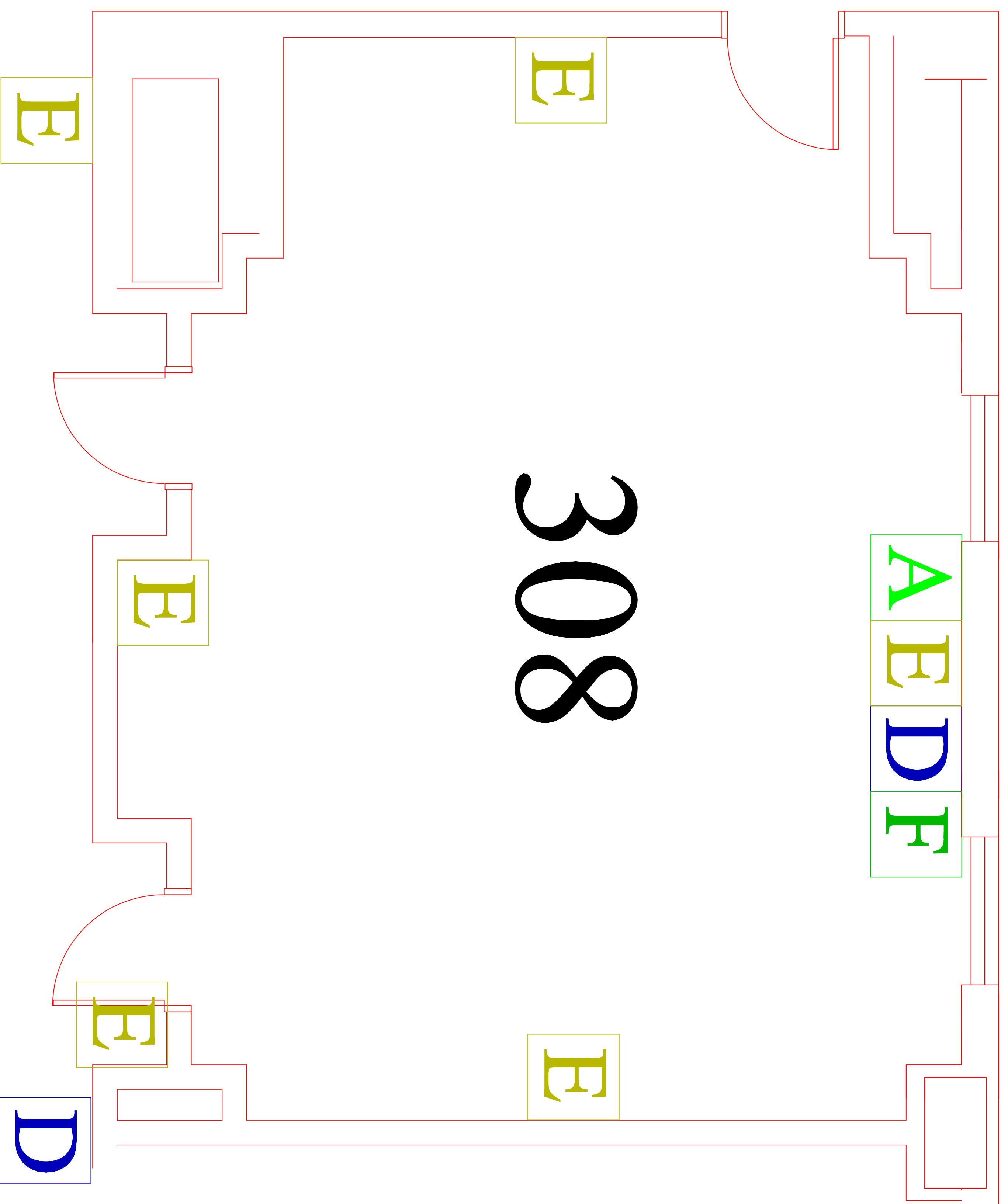
MEETING ROOM 307 AB



Fire Capacity: 246
Ceiling Height: 8' 7"

- D** Category 6 data jack
- F** Fiber Optic jack
- A** Audio Visual tie line
- T** Telephone jack
- E** Electrical outlet
- Airwall**

MEETING ROOM 308



308

D Category 6 data jack

F Fiber Optic jack

A Audio Visual tie line

T Telephone jack

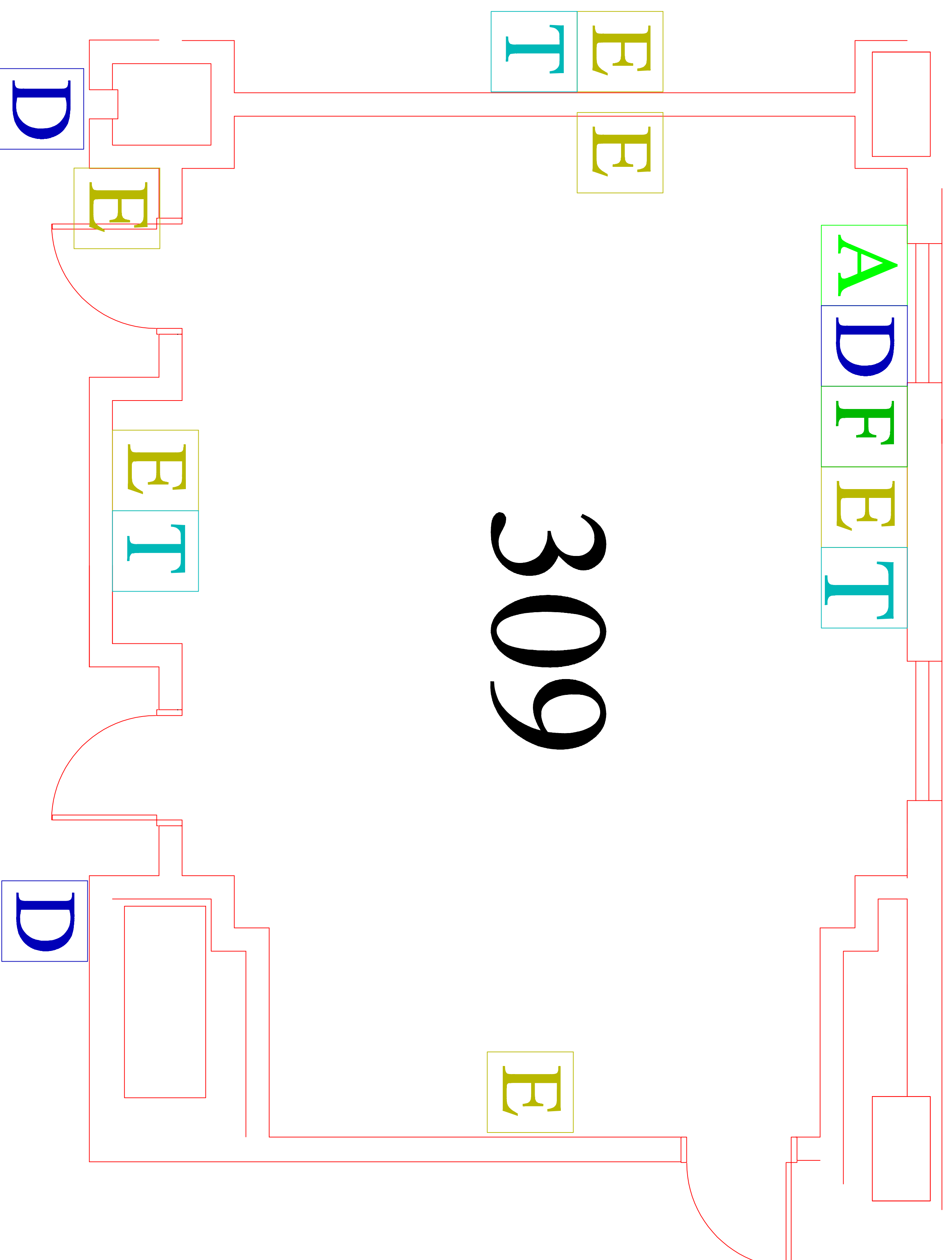
E Electrical outlet

D

Fire Capacity: 90

Ceiling Height: 8' 7"

MEETING ROOM 309



D Category 6 data jack

F Fiber Optic jack

A Audio Visual tie line

T Telephone jack

E Electrical outlet

Fire Capacity: 90
Ceiling Height: 8' 7"

MEETING ROOM 310

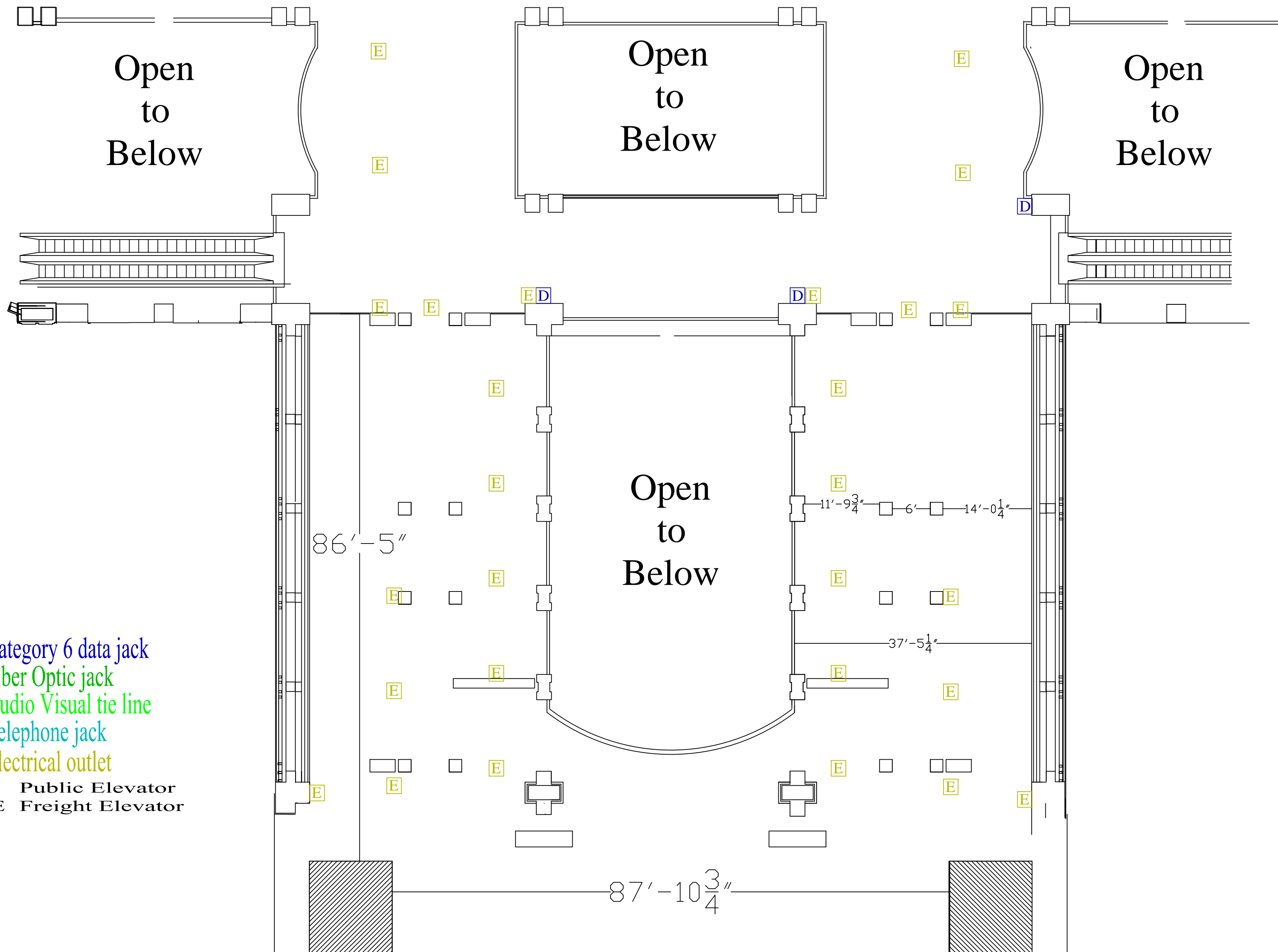
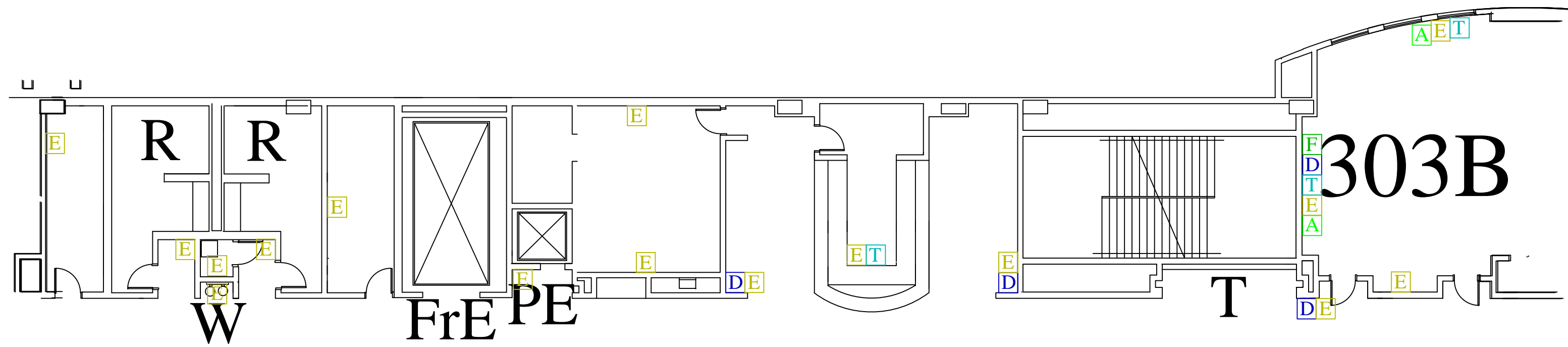
T E F A

310

F T E

- D Category 6 data jack
- F Fiber Optic jack
- A Audio Visual tie line
- T Telephone jack
- E Electrical outlet

E



- Category 6 data jack
- Fiber Optic jack
- Audio Visual tie line
- Telephone jack
- Electrical outlet
- PE Public Elevator
- FrE Freight Elevator